

2. Rechnen

Astrid Pflüger

2. Klasse

80 g/qm HOLZFREI

Brunnar  Heft

Nr. 10

$40 + 17 = 57$ $70 + 27 = 97$ $10 + 74 = 84$

$60 + 26 = 86$ $30 + 23 = 53$ $20 + 77 = 97$

$30 + 19 = 49$ $20 + 23 = 43$ $30 + 33 = 63$

$70 + 25 = 95$ $10 + 39 = 49$ $40 + 19 = 59$

$10 + 62 = 72$ $80 + 19 = 99$ $50 + 37 = 87$

$50 + 37 = 87$ $40 + 37 = 77$ $60 + 33 = 93$

$20 + 73 = 93$ $60 + 34 = 94$ $70 + 29 = 99$

$40 + 57 = 97$ ✓ $50 + 38 = 88$ $80 + 11 = 91$

$88 - 18 = 70$ $70 + 17 = 87$ $90 + 5 = 95$

$46 - 16 = 30$ $30 + 32 = 62$ ✓ $10 + 33 = 43$ ✓

$69 - 29 = 40$ $56 - 16 = 40$ $50 + 10 = 60$

$93 - 23 = 70$ $56 - 26 = 30$ $56 + 10 = 66$

$57 - 37 = 20$ $56 - 36 = 20$ $70 + 20 = 90$

$82 - 32 = 50$ $56 - 46 = 10$ $75 + 20 = 95$

$95 - 65 = 30$ $64 - 14 = 50$ $30 + 30 = 60$

$74 - 64 = 10$ ✓ $64 - 24 = 40$ $38 + 30 = 68$

$64 - 34 = 30$ $60 + 20 = 80$

$64 - 44 = 20$ ✓ $66 + 20 = 86$ ✓

$85 - 35 = 50$

$50 + 20 = 70$

$90 - 40 = 50$

$38 - 18 = 20$

$30 + 60 = 90$

$70 - 50 = 20$

$74 - 34 = 40$

$10 + 50 = 60$

$80 - 70 = 10$

$60 + 28 = 88$

$40 + 40 = 80$

$50 - 20 = 30$

$20 + 74 = 94$

$20 + 60 = 80$

$60 - 40 = 20$

$40 + 45 = 85$

$70 + 20 = 90$

$40 - 30 = 10$

$41 - 21 = 20$

$40 + 30 = 70$

$37 + 20 = 57$

$80 + 16 = 96$

$70 + 20 = 90$

$39 + 40 = 79$

$72 - 62 = 10$

$30 + 60 = 90$

$16 + 50 = 66$

$53 - 33 = 20$

$10 + 50 = 60$

$44 + 30 = 74$

$30 + 17 = 47$

$20 + 70 = 90$

$51 + 40 = 91$

$48 - 38 = 10$

$50 + 30 = 80$

$18 + 50 = 68$

42

52

62

$80 - 40 = 40$

$39 + 20 = 59$

29

39

49

$84 - 40 = ~~36~~⁴⁴$

$26 + 60 = 86$

58

68

78

$50 - 20 = 30$

31

41

51

$59 - 20 = ~~39~~$

73

83

93

$40 - 30 = 10$

66

76

86

$44 - 30 = 14$

82

92

102

$80 - 60 = 20$

21

31

41

$85 - 60 = 25$

$30 + 16 = 46$

$25 + 30 = 55$

$66 - 30 = 36$

$36 + 10 = 46$

$52 + 30 = 82$

$48 - 20 = 28$

$70 + 22 = 92$

$19 + 50 = 69$

$93 - 40 = 53$

$72 + 20 = 92$

$41 + 50 = 91$

$69 - 40 = 29$

$54 + 40 = 94$

$23 + 40 = 63$

$51 - 40 = 11$

$75 - 10 = 65$

40

60

80

20

$65 + 5 = 70$

$75 - 20 = 55$

60

40

60

70

$82 - 12 = 70$

$75 - 30 = 45$

30

70

30

50

$68 + 2 = 70$

$75 - 40 = 35$

70

30

50

30

$85 - 15 = 70$

$75 - 50 = 25$

50

50

70

10

$96 - 26 = 70$

$44 - 7 + 9 - 8 + 4 = 42$

$65 + 5 = 70$

$56 - 8 + 3 - 7 + 6 = 50$

$68 + 2 = 70$

$38 - 9 + 5 - 6 + 7 = 35$

$62 + 8 = 70$

$31 + 6 + 9 - 1 + 8 = 41$

$51 - 20 + 8 - 7 + 3 = 35$

$34 - 10 + 20 - 8 + 9 = 45$

$67 - 9 + 10 - 30 + 6 = 44$

$46 - 30 + 20 - 7 + 10 = 39$

| | | | | | |
|------------------|------------------|----------------|------------------|----------------|------------------|
| $36 + 20 = 56$ | $27 + 62 = 89$ | $42 + 44 = 86$ | $99 - 54 = 45$ | $99 - 63 = 36$ | $70 - 34 = 36$ |
| $36 + 21 = 57$ | $41 + 46 = 87$ | $11 + 44 = 55$ | $87 - 54 = 33$ | $87 - 63 = 24$ | $40 - 18 = 22$ |
| $61 + 10 = 71$ | $68 + 31 = 99$ | $32 + 44 = 76$ | $78 - 54 = 24$ | $78 - 63 = 15$ | $80 - 27 = 53$ |
| $61 + 17 = 78$ | $33 + 54 = 87$ | $51 + 44 = 95$ | $69 - 54 = 15$ | $69 - 63 = 6$ | $80 - 72 = 8$ |
| $53 + 30 = 83$ | $24 + 22 = 46$ | $23 + 44 = 67$ | $96 - 54 = 42$ | $96 - 63 = 33$ | $70 - 43 = 27$ |
| $53 + 36 = 89$ | $23 + 41 = 64$ | $54 + 44 = 98$ | $88 - 54 = 34$ | $88 - 63 = 25$ | $70 - 34 = 36$ |
| $26 + 50 = 76$ | $17 + 51 = 68$ | $12 + 44 = 56$ | $76 - 54 = 22$ | $76 - 63 = 13$ | $100 - 45 = 55$ |
| $26 + 53 = 79$ ✓ | $17 + 62 = 79$ ✓ | $45 + 44 = 89$ | $67 - 54 = 13$ ✓ | $67 - 63 = 4$ | $60 - 19 = 41$ ✓ |

| | | | | | |
|----------------|----------------|------------------|------------------|----------------|------------------|
| $42 + 23 = 65$ | $42 + 32 = 74$ | $26 - 10 = 16$ | $60 - 28 = 32$ | $90 - 34 = 56$ | $100 - 34 = 66$ |
| $11 + 23 = 34$ | $11 + 32 = 43$ | $26 - 13 = 13$ | $80 - 36 = 44$ | $90 - 15 = 75$ | $100 - 15 = 85$ |
| $32 + 23 = 55$ | $32 + 32 = 64$ | $38 - 20 = 18$ | $70 - 18 = 52$ | $90 - 58 = 32$ | $100 - 58 = 42$ |
| $51 + 23 = 74$ | $51 + 32 = 83$ | $38 - 24 = 14$ | $100 - 33 = 67$ | $90 - 29 = 61$ | $100 - 29 = 71$ |
| $23 + 23 = 46$ | $23 + 32 = 55$ | $54 - 33 = 21$ | $50 - 27 = 23$ | $90 - 46 = 44$ | $100 - 46 = 54$ |
| $54 + 23 = 77$ | $54 + 32 = 86$ | $99 - 27 = 72$ | $60 - 35 = 25$ | $90 - 65 = 25$ | $100 - 65 = 35$ |
| $12 + 23 = 35$ | $12 + 32 = 44$ | $67 - 41 = 26$ | $70 - 11 = 59$ | $90 - 21 = 69$ | $100 - 21 = 79$ |
| $45 + 23 = 68$ | $45 + 32 = 77$ | $86 - 32 = 54$ ✓ | $90 - 26 = 64$ ✓ | $20 - 4 = 16$ | $90 - 33 = 57$ ✓ |

| | | | | | |
|------------------|------------------|------------------|------------------|------------------|----------------|
| $99 - 45 = 54$ | $69 - 45 = 24$ | $76 - 45 = 31$ | $70 - 61 = 9$ | $80 - 13 = 67$ | $34 + 46 = 80$ |
| $87 - 45 = 42$ | $96 - 45 = 51$ | $67 - 45 = 22$ ✓ | $90 - 28 = 62$ | $60 - 26 = 34$ | $27 + 63 = 90$ |
| $78 - 45 = 33$ ✓ | $88 - 45 = 43$ ✓ | | $40 - 14 = 26$ | $50 - 37 = 13$ | $25 + 65 = 90$ |
| | | | $30 - 12 = 18$ ✓ | $30 - 14 = 16$ ✓ | $17 + 53 = 70$ |

$71 + 19 = 90$ $61P4 + 29P4 = 90P4$ $34 + 36 = 70$ 2 4 5 8 10 $36L + 64L = 100L$

$63 + 27 = 90$ $61P4 + 39P4 = 100P4$ $58 + 12 = 70$ 4 8 10 16 20 $78L + 22L = 100L$

$45 + 55 = 100$ $33P4 + 27P4 = 60P4$ $21 + 49 = 70$ 6 12 15 24 30 $45L + 55L = 100L$

$62 + 38 = 100$ $52P4 + 8P4 = 60P4$ $46 + 24 = 70$ 8 16 20 32 40 $17L + 83L = 100L$

$22 + 78 = 100$ $52P4 + 38P4 = 90P4$ $15 + 55 = 70$ 10 20 25 40 50 $66L + 34L = 100L$

$33 + 37 = 70$ ✓ $47P4 + 33P4 = 80P4$ $51 + 19 = 70$ 12 24 30 48 60 $24L + 76L = 100L$ ✓

$72P4 + 28P4 = 100P4$

$64P4 + 26P4 = 90P4$ ✓

$45 + 35 = 80$

$17 + 63 = 80$

$33 + 47 = 80$

$68 + 12 = 80$

$26 + 54 = 80$

$56 + 24 = 80$

14 28 35 56 70

16 32 40 64 80

18 36 45 72 90

20 40 50 80 100

$58 + 42 = 100$

$56 + 44 = 100$

$27 + 73 = 100$

$87 + 13 = 100$ ✓

$56 + 44 = 100$

$57 + 43 = 100$

$21 + 79 = 100$

$26 + 74 = 100$

$89 + 11 = 100$

$88 + 12 = 100$

$100L - 35L = 65L$

$100L - 45L = 55L$

$100L - 62L = 38L$

$100L - 27L = 73L$

$100L - 81L = 19L$

$100L - 54L = 46L$ ✓

$76 + 24 = 100$ $29 + 71 = 100$

$12 + 88 = 100$ $17 + 83 = 100$

$61 + 39 = 100$ $36 + 64 = 100$

$34 + 66 = 100$ ✓ $41 + 59 = 100$

$50P4 - 10P4 = 40P4$

$50P4 - 12P4 = 38P4$

$60P4 - 20P4 = 40P4$

$60P4 - 21P4 = 39P4$

$70P4 - 44P4 = 26P4$

$100P4 - 46P4 = 54P4$

$80P4 - 63P4 = 17P4$

$40P4 - 23P4 = 17P4$

$62 + 28 = 90$

$26 + 64 = 90$

$58 + 32 = 90$

$59 + 31 = 90$

$47 + 43 = 90$

$48 + 42 = 90$

| | | | | |
|--|-----------------------------------|-----------------------------------|---|-----------------------------|
| $100 - 35 = 65$ | $4 \cdot 5 + 80 = 100$ | $100 - 7 \cdot 10 = 30$ | $2 + 4 + 3 + 2 + 3 + 4 + 1 = 19$ | $1 \cdot 3 = 3$ |
| $100 - 66 = 34$ | $7 \cdot 8 + 44 = 100$ | $100 - 3 \cdot 8 = 76$ | $3 + 4 + 2 + 0 + 4 + 5 + 0 = 18$ | $2 \cdot 3 = 6$ |
| $100 - 51 = 49$ | $8 \cdot 4 + 68 = 100$ | $100 - 6 \cdot 4 = 76$ | $4 + 3 + 1 + 4 + 3 + 3 + 2 = 20$ | $3 \cdot 3 = 9$ |
| $100 - 49 = 51$ | $9 \cdot 3 + 73 = 100$ | $100 - 7 \cdot 5 = 65$ | $2 + 0 + 5 + 2 + 1 + 4 + 1 = 15$ | $4 \cdot 3 = 12$ |
| $100 - 82 = 18$ | $6 \cdot 8 + 52 = 100$ | $100 - 5 \cdot 8 = 60 \checkmark$ | $3 + 1 + 4 + 1 + 2 + 3 + 0 = 14 \checkmark$ | $5 \cdot 3 = 15$ |
| $100 - 84 = 16 \checkmark$ | $7 \cdot 4 + 72 = 100$ | $9 \cdot 2 = 18$ | <u>$14 + 12 + 15 + 9 + 13 + 19 + 4 = 86$</u> | $6 \cdot 3 = 18$ |
| | $6 \cdot 2 + 88 = 100$ | $7 \cdot 3 = 21$ | $3 + 1 + 4 + 0 + 2 + 4 + 1 = 15$ | $7 \cdot 3 = 21$ |
| | $7 \cdot 5 + 65 = 100$ | $5 \cdot 4 = 20$ | $2 + 2 + 3 + 1 + 1 + 5 + 1 = 15$ | $8 \cdot 3 = 24$ |
| | $9 \cdot 8 + 28 = 100$ | $3 \cdot 5 = 15$ | $3 + 4 + 1 + 4 + 3 + 2 + 2 = 19$ | $9 \cdot 3 = 27$ |
| | $4 \cdot 4 + 84 = 100 \checkmark$ | $7 \cdot 8 = 56$ | $2 + 1 + 4 + 2 + 2 + 5 + 0 = 16$ | $10 \cdot 3 = 30$ |
| $5 \cdot 10 + 10 \cdot 5 = 100$ | | $9 \cdot 10 = 90$ | <u>$4 + 2 + 2 + 1 + 1 + 4 + 3 = 17$</u> | $9 \cdot 2 = 18$ |
| $8 \cdot 8 + 9 \cdot 4 = 100$ | | $8 \cdot 2 = 16$ | <u>$14 + 10 + 14 + 8 + 9 + 20 + 7 = 82$</u> | $8 \cdot 3 = 24$ |
| $9 \cdot 8 + 7 \cdot 4 = 100$ | | $6 \cdot 3 = 18$ | $72 = 9 \cdot 8$ | $6 \cdot 4 = 24$ |
| $6 \cdot 5 + 7 \cdot 10 = 100$ | | $3 \cdot 4 = 12$ | $36 = 9 \cdot 4$ | $3 \cdot 5 = 15$ |
| $10 \cdot 4 + 6 \cdot 10 = 100 \checkmark$ | | $1 \cdot 5 = 5 \checkmark$ | $64 = 8 \cdot 8$ | $6 \cdot 8 = 48$ |
| | | | $18 = 6 \cdot 3$ | $7 \cdot 10 = 70$ |
| | | | $48 = 6 \cdot 8$ | $7 \cdot 2 = 14$ |
| | | | $24 = 8 \cdot 3$ | $5 \cdot 3 = 15$ |
| | | | $16 = 4 \cdot 4$ | $9 \cdot 4 = 36$ |
| | | | $56 = 7 \cdot 8$ | $7 \cdot 5 = 35 \checkmark$ |
| | | | $12 = 3 \cdot 4$ | |
| | | | $28 = 7 \cdot 4$ | |

$$3 = 3$$

$$6 = 3 + 3$$

$$9 = 3 + 3 + 3$$

$$12 = 3 + 3 + 3 + 3$$

$$15 = 3 + 3 + 3 + 3 + 3$$

$$18 = 3 + 3 + 3 + 3 + 3 + 3$$

$$21 = 3 + 3 + 3 + 3 + 3 + 3 + 3$$

$$24 = 3 + 3 + 3 + 3 + 3 + 3 + 3 + 3$$

$$27 = 3 + 3 + 3 + 3 + 3 + 3 + 3 + 3 + 3$$

$$30 = 3 + 3 + 3 + 3 + 3 + 3 + 3 + 3 + 3 + 3$$

$$10 \cdot 3 = 30 \quad 15 = 5 \cdot 3 \quad 7 \cdot 3 = 21$$

$$3 \cdot 3 = 9 \quad 9 = 3 \cdot 3 \quad 9 \cdot 4 = 36$$

$$1 \cdot 3 = 3 \quad 24 = 8 \cdot 3 \quad 8 \cdot 2 = 16$$

$$8 \cdot 3 = 24 \quad 30 = 10 \cdot 3 \quad 4 \cdot 8 = 32$$

$$6 \cdot 3 = 18 \checkmark \quad 18 = 6 \cdot 3 \quad 6 \cdot 5 = 30$$

$$2 \cdot 3 = 6 \quad 6 = 2 \cdot 3 \quad 9 \cdot 3 = 27 \checkmark$$

$$4 \cdot 3 = 12 \quad 3 = 1 \cdot 3$$

$$7 \cdot 3 = 21 \quad 12 = 4 \cdot 3$$

$$9 \cdot 3 = 27 \quad 21 = 7 \cdot 3$$

$$5 \cdot 3 = 15 \checkmark \quad 27 = 9 \cdot 3 \checkmark$$

$$6 \cdot 2 = 12 \quad 8 \cdot 2 = 16 \quad 9 \cdot 3 - 2 = 25$$

$$8 \cdot 3 = 24 \quad 8 \cdot 3 = 24 \quad 5 \cdot 3 + 1 = 16$$

$$4 \cdot 10 = 40 \quad 8 \cdot 4 = 32 \quad 7 \cdot 3 - 2 = 19$$

$$7 \cdot 5 = 35 \quad 8 \cdot 5 = 40 \quad 4 \cdot 3 + 1 = 13$$

$$6 \cdot 4 = 24 \quad 8 \cdot 8 = 64 \quad 6 \cdot 3 + 2 = 20$$

$$6 \cdot 3 = 18 \checkmark \quad 8 \cdot 10 = 80 \checkmark \quad 3 \cdot 3 + 2 = 11 \checkmark$$

$$8 \cdot 2 + 1 = 17 \quad 4 \cdot 3 = 12 \quad 12 = 4 \cdot 3 \checkmark$$

$$9 \cdot 4 + 3 = 39 \quad 6 \cdot 8 = 48 \quad 12 = 3 \cdot 4 \checkmark$$

$$7 \cdot 5 + 4 = 39 \quad 9 \cdot 2 = 18 \quad 12 = 6 \cdot 2 \checkmark$$

$$9 \cdot 3 + 2 = 29 \quad 8 \cdot 3 = 24 \quad 12 = 1 \cdot 12 \checkmark$$

$$8 \cdot 10 + 7 = 87 \quad 7 \cdot 5 = 35 \quad 12 = 12 \cdot 1 \checkmark$$

$$5 \cdot 3 + 2 = 17 \checkmark \quad 6 \cdot 3 = 18 \quad 12 = 2 \cdot 6 \checkmark$$

$$7 \cdot 4 = 28$$

$$9 \cdot 3 = 27$$

$$7 \cdot 2 = 14$$

$$9 \cdot 5 = 45 \checkmark$$

$6 = 6$

$12 = 6 + 6$

$18 = 6 + 6 + 6$

$24 = 6 + 6 + 6 + 6$

$30 = 6 + 6 + 6 + 6 + 6$

$36 = 6 + 6 + 6 + 6 + 6 + 6$

$42 = 6 + 6 + 6 + 6 + 6 + 6 + 6$

$48 = 6 + 6 + 6 + 6 + 6 + 6 + 6 + 6$

$54 = 6 + 6 + 6 + 6 + 6 + 6 + 6 + 6 + 6$

$60 = 6 + 6 + 6 + 6 + 6 + 6 + 6 + 6 + 6 + 6$

$1 \cdot 6 = 6$

$2 \cdot 6 = 12$

$3 \cdot 6 = 18$

$4 \cdot 6 = 24$

$5 \cdot 6 = 30$

$6 \cdot 6 = 36$

$7 \cdot 6 = 42$

$8 \cdot 6 = 48$

$9 \cdot 6 = 54$

$10 \cdot 6 = 60$

$8 \cdot 5 = 40$

$8 \cdot 6 = 48$

$3 \cdot 5 = 15$

$3 \cdot 6 = 18$

$7 \cdot 3 = 21$

$7 \cdot 4 = 28$

$7 \cdot 5 = 35$

$7 \cdot 6 = 42$

$24 = 8 \cdot 3$

$24 = 6 \cdot 4$

$24 = 4 \cdot 6$

$24 = 3 \cdot 8$

$18 = 9 \cdot 2$

$18 = 6 \cdot 3$

$18 = 3 \cdot 6$

$30 = 5 \cdot 6$

$42 = 6 \cdot 7$

$3 \cdot 6 = 18$

$6 \cdot 3 = 18$

$5 \cdot 6 = 30$

$6 \cdot 5 = 30$

$8 \cdot 6 = 48$

$6 \cdot 8 = 48$

$4 \cdot 6 = 24$

$6 \cdot 4 = 24$

$6 = 1 \cdot 6$

$42 = 7 \cdot 6$

$60 = 10 \cdot 6$

$48 = 8 \cdot 6$

$54 = 9 \cdot 6$

$12 = 2 \cdot 6$

$18 = 3 \cdot 6$

$30 = 5 \cdot 6$

$7 \cdot 5 = 35$

$5 \cdot 7 = 35$

$8 \cdot 10 = 80$

$10 \cdot 8 = 80$

$6 \cdot 10 = 60$

$10 \cdot 6 = 60$

$9 \cdot 5 = 45$

$9 \cdot 6 = 54$

$18 : 6 = 3$

$48 : 6 = 8$

$12 : 6 = 2$

$54 : 6 = 9$

$30 : 6 = 5$

$60 : 6 = 10$

$24 : 6 = 4$

$36 : 6 = 6$

$42 : 6 = 7$

$6 \cdot 6 + 5 = 41$

$9 \cdot 6 - 5 = 49$

$3 \cdot 6 + 4 = 22$

$7 \cdot 6 - 3 = 39$

$8 \cdot 6 + 3 = 51$

$10 \cdot 6 - 2 = 58$

$4 \cdot 6 + 2 = 26$

$2 \cdot 6 - 4 = 8$

$1 \cdot 6 + 5 = 11$

$5 \cdot 6 - 5 = 25$

$7 \cdot 6 + 4 = 46 \checkmark$

$8 \cdot 6 - 3 = 45 \checkmark$

$83 - 8 = 75$

$83 - 4 = 79$

$4 \cdot 6 + 5 = 29$

$61 - 8 = 53$

$61 - 4 = 57$

$8 \cdot 4 - 3 = 29$

$25 - 8 = 17$

$25 - 4 = 21$

$9 \cdot 3 + 2 = 29$

$72 - 8 = 64$

$72 - 4 = 68$

$6 \cdot 6 - 4 = 32$

$40 - 8 = 32$

$40 - 4 = 36$

$7 \cdot 4 + 3 = 31$

$54 - 8 = 46$

$54 - 4 = 50$

$7 \cdot 3 - 2 = 19$

$93 - 8 = 85$

$93 - 4 = 89$

$6 \cdot 5 + 10 = 40$

$81 - 8 = 73 \checkmark$

$81 - 4 = 77 \checkmark$

$8 \cdot 6 + 2 = 50$

$83 - 7 = 76$

$54 - 7 = 47$

$7 \cdot 4 + 12 = 40$

$61 - 7 = 54$

$93 - 7 = 86$

$6 \cdot 3 + 2 = 20$

$25 - 7 = 18$

$81 - 7 = 74$

$2 \cdot 4 + 2 = 10$

$72 - 7 = 65$

$6 \cdot 6 + 4 = 40 \checkmark$

$40 - 7 = 33$

$1 \cdot 9 = 9$

$4 \cdot 9 = 36$

$1 \cdot 9 = 9$

$2 \cdot 9 = 18$

$7 \cdot 9 = 63$

$8 \cdot 9 = 72$

$3 \cdot 9 = 27$

$3 \cdot 9 = 27$

$3 \cdot 9 = 27$

$4 \cdot 9 = 36$

$8 \cdot 9 = 72$

$9 \cdot 3 = 27$

$5 \cdot 9 = 45$

$2 \cdot 9 = 18$

$5 \cdot 9 = 45$

$6 \cdot 9 = 54$

$5 \cdot 9 = 45$

$9 \cdot 5 = 45$

$7 \cdot 9 = 63$

$9 \cdot 9 = 81$

$8 \cdot 9 = 72$

$8 \cdot 9 = 72$

$4 \cdot 9 = 36$

$9 \cdot 8 = 72$

$9 \cdot 9 = 81$

$10 \cdot 9 = 90$

$2 \cdot 9 = 18$

$10 \cdot 9 = 90$

$6 \cdot 9 = 54$

$9 \cdot 2 = 18 \checkmark$

$9 = 9$

$18 = 9 + 9$

$27 = 9 + 9 + 9$

$36 = 9 + 9 + 9 + 9$

$45 = 9 + 9 + 9 + 9 + 9$

$54 = 9 + 9 + 9 + 9 + 9 + 9$

$63 = 9 + 9 + 9 + 9 + 9 + 9 + 9$

$72 = 9 + 9 + 9 + 9 + 9 + 9 + 9 + 9$

$81 = 9 + 9 + 9 + 9 + 9 + 9 + 9 + 9 + 9$

$90 = 9 + 9 + 9 + 9 + 9 + 9 + 9 + 9 + 9 + 9$

1 11 21 31 41 51 61 71 81
 2 12 22 32 42 52 62 72 82
 3 13 23 33 43 53 63 73 83
 4 14 24 34 44 54 64 74 84
 5 15 25 35 45 55 65 75 85
 6 16 26 36 46 56 66 76 86
 7 17 27 37 47 57 67 77 87
 8 18 28 38 48 58 68 78 88
 9 19 29 39 49 59 69 79 89
 10 20 30 40 50 60 70 80 90

$4 \cdot 9 = 36$ $6 \cdot 4 = 24$ $7 \cdot 5 = 35$
 $9 \cdot 4 = 36$ $4 \cdot 6 = 24$ $7 \cdot 4 = 28$
 $6 \cdot 9 = 54$ $8 \cdot 4 = 32$ $7 \cdot 3 = 21$
 $9 \cdot 6 = 54$ $4 \cdot 8 = 32$ $7 \cdot 2 = 14$
 $10 \cdot 9 = 90$ $6 \cdot 2 = 12$ $6 \cdot 3 = 18$
 $9 \cdot 10 = 90$ $2 \cdot 6 = 12$ $3 \cdot 6 = 18$
 $7 \cdot 9 = 63$ $6 \cdot 5 = 30$ $4 \cdot 3 = 12$
 $9 \cdot 9 = 81$ ✓ $5 \cdot 6 = 30$ ✓ $3 \cdot 4 = 12$ ✓

$8 \cdot 8 = 64$ $7 \cdot 9 = 63$ $8 \cdot 7 + 6 = 62$
 $4 \cdot 4 = 16$ $7 \cdot 8 = 56$ $4 \cdot 7 + 5 = 33$
 $5 \cdot 5 = 25$ $8 \cdot 10 = 80$ $9 \cdot 7 + 4 = 67$
 $10 \cdot 10 = 100$ $5 \cdot 9 = 45$ $2 \cdot 7 + 5 = 9$
 $9 \cdot 9 = 81$ $7 \cdot 2 = 14$ $5 \cdot 7 + 6 = 41$
 $2 \cdot 2 = 4$ $4 \cdot 5 = 20$ $6 \cdot 7 - 4 = 38$
 $3 \cdot 3 = 9$ $5 \cdot 8 = 40$ $3 \cdot 7 - 5 = 16$
 $6 \cdot 6 = 36$ ✓ $8 \cdot 6 = 48$ $7 \cdot 7 - 6 = 43$

$7 = 7$
 $14 = 7 + 7$
 $21 = 7 + 7 + 7$
 $28 = 7 + 7 + 7 + 7$
 $35 = 7 + 7 + 7 + 7 + 7$
 $42 = 7 + 7 + 7 + 7 + 7 + 7$
 $49 = 7 + 7 + 7 + 7 + 7 + 7 + 7$
 $56 = 7 + 7 + 7 + 7 + 7 + 7 + 7 + 7$
 $63 = 7 + 7 + 7 + 7 + 7 + 7 + 7 + 7 + 7$
 $70 = 7 + 7 + 7 + 7 + 7 + 7 + 7 + 7 + 7 + 7$

| | | |
|----|-------------------|--|
| 7 | $1 \cdot 7 = 7$ | $4 \cdot 7 \text{Tg.} = 28 \text{Tg.}$ |
| 14 | $2 \cdot 7 = 14$ | $6 \cdot 7 \text{Tg.} = 42 \text{Tg.}$ |
| 21 | $3 \cdot 7 = 21$ | $3 \cdot 7 \text{Tg.} = 21 \text{Tg.}$ |
| 28 | $4 \cdot 7 = 28$ | $8 \cdot 7 \text{Tg.} = 56 \text{Tg.}$ |
| 35 | $5 \cdot 7 = 35$ | $5 \cdot 7 \text{Tg.} = 35 \text{Tg.}$ |
| 42 | $6 \cdot 7 = 42$ | $7 \cdot 7 \text{Tg.} = 49 \text{Tg.}$ |
| 49 | $7 \cdot 7 = 49$ | $2 \cdot 7 \text{Tg.} = 14 \text{Tg.}$ |
| 56 | $8 \cdot 7 = 56$ | $10 \cdot 7 \text{Tg.} = 70 \text{Tg.} \checkmark$ |
| 63 | $9 \cdot 7 = 63$ | |
| 70 | $10 \cdot 7 = 70$ | |

| | | |
|-----------------------------|-----------------------------|---------------------------------|
| $7 \cdot 5 = 35$ | $21 = 3 \cdot 7$ | $8 \cdot 7 + 6 = 62$ |
| $5 \cdot 7 = 35$ | $49 = 7 \cdot 7$ | $4 \cdot 7 + 5 = 33$ |
| $7 \cdot 2 = 14$ | $63 = 9 \cdot 7$ | $9 \cdot 7 - 4 = 59$ |
| $2 \cdot 7 = 14$ | $42 = 6 \cdot 7$ | $2 \cdot 7 - 5 = 9$ |
| $7 \cdot 4 = 28$ | $56 = 8 \cdot 7$ | $5 \cdot 7 + 6 = 41$ |
| $4 \cdot 7 = 28$ | $28 = 4 \cdot 7$ | $6 \cdot 7 - 4 = 38$ |
| $7 \cdot 3 = 21$ | $70 = 10 \cdot 7$ | $3 \cdot 7 - 5 = 16$ |
| $3 \cdot 7 = 21 \checkmark$ | $44 = 2 \cdot 7 \checkmark$ | $7 \cdot 7 - 6 = 43 \checkmark$ |

| | | |
|--|--------------------------------|----------------------------|
| $2 \text{ Wch.} = 14 \text{Tg.}$ | $32 - 8 = 24$ | $7 \cdot 5 = 35$ |
| $5 \text{ " } = 35 \text{ "}$ | $24 + 6 = 30$ | $35 + 5 = 40$ |
| $3 \text{ " } = 21 \text{ "}$ | $30 - 20 = 10$ | $40 - 20 = 20$ |
| $4 \text{ " } = 28 \text{ "}$ | $10 \cdot 10 = 100 \checkmark$ | $20 + 80 = 100 \checkmark$ |
| $8 \text{ " } = 56 \text{ "}$ | $9 \cdot 4 = 36$ | $70 + 30 = 100$ |
| $9 \text{ " } = 63 \text{ "}$ | $36 - 30 = 6$ | $100 - 90 = 10$ |
| $1 \text{ " } = 7 \text{ "}$ | $6 \cdot 2 = 12$ | $10 \cdot 3 = 30$ |
| $6 \text{ " } = 42 \text{ "}$ | $12 + 8 = 20 \checkmark$ | $30 - 30 = 0 \checkmark$ |
| $10 \text{ " } = 70 \text{ " } \checkmark$ | | |

| |
|--|
| $1 = 1$ |
| $2 = 1 + 1$ |
| $3 = 1 + 1 + 1$ |
| $4 = 1 + 1 + 1 + 1$ |
| $5 = 1 + 1 + 1 + 1 + 1$ |
| $6 = 1 + 1 + 1 + 1 + 1 + 1$ |
| $7 = 1 + 1 + 1 + 1 + 1 + 1 + 1$ |
| $8 = 1 + 1 + 1 + 1 + 1 + 1 + 1 + 1$ |
| $9 = 1 + 1 + 1 + 1 + 1 + 1 + 1 + 1 + 1$ |
| $10 = 1 + 1 + 1 + 1 + 1 + 1 + 1 + 1 + 1 + 1$ |

| | | |
|-------------------|----------------------------------|----------------------------------|
| $1 \cdot 1 = 1$ | $8 \cdot 1 P4 = 8 P4$ | $3 \cdot 10 P4 = 30 P4$ |
| $2 \cdot 1 = 2$ | $6 \cdot 1 P4 = 6 P4$ | $3 \cdot 5 P4 = 15 P4$ |
| $3 \cdot 1 = 3$ | $4 \cdot 1 P4 = 4 P4$ | $3 \cdot 4 P4 = 12 P4$ |
| $4 \cdot 1 = 4$ | $7 \cdot 1 P4 = 7 P4$ | $3 \cdot 3 P4 = 9 P4$ |
| $5 \cdot 1 = 5$ | $9 \cdot 1 P4 = 9 P4 \checkmark$ | $3 \cdot 2 P4 = 6 P4 \checkmark$ |
| $6 \cdot 1 = 6$ | $1 \cdot 5 = 5$ | $1 \cdot 9 = 9$ |
| $7 \cdot 1 = 7$ | $5 \cdot 1 = 5$ | $9 \cdot 1 = 9$ |
| $8 \cdot 1 = 8$ | $1 \cdot 8 = 8$ | $1 \cdot 4 = 4$ |
| $9 \cdot 1 = 9$ | $8 \cdot 1 = 8$ | $4 \cdot 1 = 4$ |
| $10 \cdot 1 = 10$ | $4 \cdot 0 = 0$ | $1 \cdot 6 = 6 \checkmark$ |
| | $10 \cdot 5 = 50$ | $7 \cdot 6 = 42$ |
| | $0 \cdot 5 = 0$ | $3 \cdot 6 = 18$ |
| | $1 \cdot 8 = 8$ | $5 \cdot 6 = 30$ |
| | $0 \cdot 8 = 0$ | $2 \cdot 6 = 12$ |
| | $9 \cdot 1 = 9$ | $9 \cdot 6 = 54$ |
| | $9 \cdot 0 = 0 \checkmark$ | $4 \cdot 6 = 24$ |
| | | $6 \cdot 6 = 36 \checkmark$ |

| | | | | | | | | | |
|----|----|----|----|----|----|----|----|----|-----|
| 1 | 2 | 3 | 4 | 5 | 6 | 7 | 8 | 9 | 10 |
| 2 | 4 | 6 | 8 | 10 | 12 | 14 | 16 | 18 | 20 |
| 3 | 6 | 9 | 12 | 15 | 18 | 21 | 24 | 27 | 30 |
| 4 | 8 | 12 | 16 | 20 | 24 | 28 | 32 | 36 | 40 |
| 5 | 10 | 15 | 20 | 25 | 30 | 35 | 40 | 45 | 50 |
| 6 | 12 | 18 | 24 | 30 | 36 | 42 | 48 | 54 | 60 |
| 7 | 14 | 21 | 28 | 35 | 42 | 49 | 56 | 63 | 70 |
| 8 | 16 | 24 | 32 | 40 | 48 | 56 | 64 | 72 | 80 |
| 9 | 18 | 27 | 36 | 45 | 54 | 63 | 72 | 81 | 90 |
| 10 | 20 | 30 | 40 | 50 | 60 | 70 | 80 | 90 | 100 |

Quadratrahler

| | | |
|------------------|------------------|---------------------------------|
| $1 \cdot 0 = 0$ | $0 \cdot 1 = 0$ | $9 \cdot 8 + 5 = 77$ |
| $2 \cdot 0 = 0$ | $0 \cdot 2 = 0$ | $7 \cdot 6 - 5 = 37$ |
| $3 \cdot 0 = 0$ | $0 \cdot 3 = 0$ | $8 \cdot 3 + 2 = 26$ |
| $4 \cdot 0 = 0$ | $0 \cdot 4 = 0$ | $6 \cdot 9 - 8 = 46$ |
| $5 \cdot 0 = 0$ | $0 \cdot 5 = 0$ | $3 \cdot 7 + 4 = 25$ |
| $6 \cdot 0 = 0$ | $0 \cdot 6 = 0$ | $7 \cdot 8 + 7 = 63$ |
| $7 \cdot 0 = 0$ | $0 \cdot 7 = 0$ | $4 \cdot 6 - 5 = 19 \checkmark$ |
| $8 \cdot 0 = 0$ | $0 \cdot 8 = 0$ | |
| $9 \cdot 0 = 0$ | $0 \cdot 9 = 0$ | |
| $10 \cdot 0 = 0$ | $0 \cdot 10 = 0$ | |

$7 \cdot 7 + 5 = 54$

$7 \cdot 7 + 7 = 56$

$8 \cdot 5 = 40$

$6 \cdot 8 = 48$

$36 + 25 = 61$

$47 + 17 = 64$

$9 \cdot 6 + 5 = 59$

$9 \cdot 6 + 7 = 61$

$8 \cdot 1 = 8$

$6 \cdot 10 = 60$

$65 + 27 = 92$

$18 + 17 = 35$

$8 \cdot 9 + 5 = 77$

$8 \cdot 9 + 7 = 79$

$8 \cdot 9 = 72$

$6 \cdot 0 = 0$

$64 + 27 = 91$

$39 + 17 = 56$

$7 \cdot 3 + 5 = 26$

$7 \cdot 3 + 7 = 28$

$8 \cdot 7 = 56$

$6 \cdot 6 = 36$

$54 + 28 = 82$

$55 + 17 = 72$

$8 \cdot 4 + 5 = 37$

$8 \cdot 4 + 7 = 39$

$8 \cdot 2 = 16$

$6 \cdot 3 = 18 \checkmark$

$19 + 26 = 45$

$77 + 17 = 94$

$8 \cdot 9 + 5 = 77$

$8 \cdot 9 + 7 = 79$

$8 \cdot 4 = 32$

$47 + 25 = 72$

$19 + 27 = 46$

$66 + 17 = 83$

$8 \cdot 7 + 5 = 61 \checkmark$

$8 \cdot 7 + 7 = 63 \checkmark$

$8 \cdot 8 = 64$

$18 + 25 = 43$

$36 + 29 = 65$

$28 + 17 = 45$

$7 \cdot 7 - 6 = 43$

$7 \cdot 7 - 8 = 41$

$8 \cdot 10 = 80$

$39 + 25 = 64$

$35 + 29 = 64 \checkmark$

$46 + 17 = 63 \checkmark$

$9 \cdot 6 - 6 = 48$

$9 \cdot 6 - 8 = 46$

$8 \cdot 0 = 0$

$55 + 25 = 80$

$46 - 29 = 17$

$52 - 25 = 27$

$8 \cdot 9 - 6 = 66$

$8 \cdot 9 - 8 = 64$

$8 \cdot 6 = 48$

$77 + 25 = 102$

$46 - 28 = 18$

$82 - 28 = 54$

$7 \cdot 3 - 6 = 15$

$7 \cdot 3 - 8 = 13$

$8 \cdot 3 = 24$

$66 + 25 = 91$

$64 - 27 = 37$

$82 - 29 = 53 \checkmark$

$8 \cdot 4 - 6 = 26$

$8 \cdot 4 - 8 = 24$

$28 + 25 = 53$

$71 - 26 = 45$

$71 - 24 = 47$

$8 \cdot 9 - 6 = 66$

$8 \cdot 9 - 8 = 64$

$46 + 25 = 71 \checkmark$

$53 - 25 = 28 \checkmark$

$82 - 24 = 58 \checkmark$

$8 \cdot 7 - 6 = 50 \checkmark$

$8 \cdot 7 - 8 = 48 \checkmark$

$62 - 16 = 46$

$82 - 16 = 66 \checkmark$

$62 - 29 = 33$

$82 - 29 = 53$

$2 \cdot 5 = 10$

$2 \cdot 8 = 16$

$6 \cdot 5 = 30$

$34 - 16 = 18$

$62 - 24 = 38$

$34 - 29 = 5$

$2 \cdot 1 = 2$

$2 \cdot 10 = 20$

$6 \cdot 1 = 6$

$91 - 16 = 75$

$34 - 24 = 10$

$91 - 29 = 62$

$2 \cdot 9 = 18$

$2 \cdot 0 = 0$

$6 \cdot 9 = 54$

$85 - 16 = 69$

$91 - 24 = 67$

$85 - 29 = 56$

$2 \cdot 7 = 14$

$2 \cdot 6 = 12$

$6 \cdot 7 = 42$

$26 - 16 = 10$

$85 - 24 = 61$

$26 - 29 = -3$

$2 \cdot 2 = 4$

$2 \cdot 3 = 6 \checkmark$

$6 \cdot 2 = 12$

$43 - 16 = 27$

$26 - 24 = 2$

$43 - 29 = 14$

$2 \cdot 4 = 8$

$2 \cdot$

$6 \cdot 4 = 24$

$71 - 16 = 55 \checkmark$

$43 - 24 = 19$

$71 - 29 = 42$

| | | |
|------------------|------------------|------------------|
| $85 - 18 = 67$ | $85 - 32 = 53$ | $85 - 24 = 61$ |
| $91 - 18 = 73$ | $91 - 32 = 59$ | $91 - 24 = 67$ |
| $72 - 18 = 54$ | $72 - 32 = 40$ | $72 - 24 = 48$ |
| $54 - 18 = 36$ | $54 - 32 = 22$ | $54 - 24 = 30$ |
| $63 - 18 = 45$ | $63 - 32 = 31$ | $63 - 24 = 39$ |
| $42 - 18 = 24$ ✓ | $42 - 32 = 10$ ✓ | $42 - 24 = 18$ ✓ |

| | | |
|------------------|-----------------|----------------------|
| $85 - 16 = 69$ | $85 - 35 = 50$ | $37DM + 14DM = 51DM$ |
| $91 - 16 = 75$ | $91 - 35 = 56$ | $29DM + 17DM = 46DM$ |
| $72 - 16 = 56$ | $72 - 35 = 37$ | $46DM + 18DM = 64DM$ |
| $54 - 16 = 38$ | $54 - 35 = 19$ | $18DM + 18DM = 36DM$ |
| $63 - 16 = 47$ | $63 - 35 = 28$ | |
| $42 - 16 = 26$ ✓ | $42 - 35 = 7$ ✓ | $42 + 8 = 50$ |
| | | $28 + 22 = 50$ |

| | | |
|------------------|------------------|------------------|
| $74 + 19 = 93$ | $44 + 29 = 73$ | $36 + 14 = 50$ |
| $38 + 24 = 62$ | $63 + 18 = 81$ | $17 + 33 = 50$ |
| $17 + 18 = 35$ | $57 + 26 = 83$ | $23 + 27 = 50$ |
| $29 + 29 = 58$ ✓ | $66 + 26 = 92$ ✓ | $38 + 12 = 50$ |
| | | $14 + 36 = 50$ ✓ |

| | | |
|------------------------|------------------|----------------|
| $55Pf + 15Pf = 70Pf$ | $62 + 20 = 82$ | $83 + 16 = 99$ |
| $48Pf + 22Pf = 70Pf$ | $59 + 23 = 82$ | $85 + 7 = 92$ |
| $69Pf + 21Pf = 90Pf$ | $54 + 20 = 74$ | $56 + 27 = 83$ |
| $39Pf + 11Pf = 50Pf$ | $55 + 19 = 74$ | $49 + 26 = 75$ |
| $47Pf + 33Pf = 80Pf$ | $75 + 20 = 95$ | $78 + 13 = 91$ |
| $57Pf + 23Pf = 80Pf$ ✓ | $76 + 19 = 95$ ✓ | $79 + 12 = 91$ |

| | | |
|----------------|----------------|----------------|
| $67 + 15 = 82$ | $83 + 16 = 99$ | $67 + 15 = 82$ |
| $48 + 28 = 76$ | $85 + 7 = 92$ | $48 + 28 = 76$ |
| $39 + 39 = 78$ | $56 + 27 = 83$ | $39 + 39 = 78$ |
| $38 + 53 = 91$ | $49 + 26 = 75$ | $38 + 53 = 91$ |
| $26 + 15 = 41$ | $78 + 13 = 91$ | $26 + 15 = 41$ |
| $73 + 22 = 95$ | $79 + 12 = 91$ | $73 + 22 = 95$ |

| | | |
|-----------------------|----------------|----------------|
| $80DM - 70DM = 10DM$ | $50 - 40 = 10$ | $75 - 60 = 15$ |
| $90'' - 60'' = 30''$ | $50 - 38 = 12$ | $75 - 63 = 12$ |
| $70'' - 50'' = 20''$ | $80 - 70 = 10$ | $75 - 68 = 7$ |
| $60'' - 40'' = 20''$ | $80 - 65 = 15$ | $54 - 40 = 14$ |
| $100'' - 70'' = 30''$ | $70 - 40 = 30$ | $54 - 44 = 10$ |
| $80'' - 50'' = 30''$ | $70 - 39 = 31$ | $54 - 46 = 8$ |

$81 - 59 = 22$

$62 - 47 = 15$

$75 - 38 = 37$

$51 - 27 = 24$

$94 - 48 = 46$

$76 - 57 = 19$

$5 \quad 10 \quad 13$

$1 \quad 1 \quad 1$

$2 \quad 2 \quad 2$

$3 \quad 3 \quad 3$

$6 \quad 11 \quad 14$

$1 \quad 1 \quad 1$

$2 \quad 2 \quad 2$

$3 \quad 3 \quad 3$

$7 \quad 12 \quad 15$

$30 \quad 45 \quad 1$

$1 \quad 1 \quad 2$

$2 \quad 2 \quad 3$

$3 \quad 3 \quad 16$

$44 \quad 8 \quad 13169 \quad 76$

$11.20 + 40 = 12 \text{ Uhr}$

$6.40 + 20 = 7 \text{ Uhr}$

$13.28 + 32 = 14 \text{ Uhr}$

$8.33 + 27 = 9 \text{ Uhr}$

$9.35 + 25 = 10 \text{ Uhr}$

$12.05 + 55 = 13 \text{ Uhr}$

$4.17 + 43 = 5 \text{ Uhr}$

$14.57 + 3 = 15 \text{ Uhr} \checkmark$

~~$8 \text{ Uhr } 15 \text{ Min.} - 8 \text{ Uhr } 0 \text{ Min.}$~~

$8 \text{ Uhr } 15 \text{ Min.} - 8 \text{ Uhr } 40 \text{ Min.} = 25 \text{ Min.}$

$9 \text{ } 20 \text{ } - 9 \text{ } 55 \text{ } = 35 \text{ } \text{ }$

$10 \text{ } 08 \text{ } - 10 \text{ } 40 \text{ } = 32 \text{ } \text{ }$

$12 \text{ } 01 \text{ } - 12 \text{ } 28 \text{ } = 27 \text{ } \text{ }$

$7 \text{ } 50 \text{ } - 8 \text{ } 20 \text{ } = 30 \text{ } \text{ }$

$10 \text{ } 20 \text{ } - 11 \text{ } 10 \text{ } = 50 \text{ } \text{ }$

$11 \text{ } 40 \text{ } - 12 \text{ } 15 \text{ } = 35 \text{ } \text{ }$

$13 \text{ } 52 \text{ } - 14 \text{ } 05 \text{ } = 13 \text{ } \text{ } \checkmark$

$1 \text{ Tg.} + 8 \text{ Std.} = 32 \text{ Std.}$

$1 \text{ Tg.} + 13 \text{ Std.} = 37 \text{ Std.}$

$1 \text{ Tg.} + 9 \text{ Std.} = 33 \text{ Std.}$

$1 \text{ Tg.} + 17 \text{ Std.} = 41 \text{ Std.}$

$1 \text{ Tg.} + 20 \text{ Std.} = 44 \text{ Std.}$

$1 \text{ Tg.} + 13 \text{ Std.} = 37 \text{ Std.} \checkmark$

$1 \text{ Tg.} - 6 \text{ Std.} = 18 \text{ Std.}$

$1 \text{ Tg.} - 9 \text{ Std.} = 15 \text{ Std.}$

$1 \text{ Tg.} - 5 \text{ Std.} = 19 \text{ Std.}$

$1 \text{ Tg.} - 16 \text{ Std.} = 8 \text{ Std.}$

$1 \text{ Tg.} - 11 \text{ Std.} = 13 \text{ Std.}$

$1 \text{ Tg.} - 19 \text{ Std.} = 5 \text{ Std.} \checkmark$

$17.45 \text{ Uhr} \quad 13.20 \text{ Uhr}$

$23.35 \text{ } \quad 21.14 \text{ } \text{ }$

$7.25 \text{ } \quad 8.25 \text{ } \text{ }$

$3.15 \text{ } \quad 9.34 \text{ } \text{ }$

$6.30 \text{ } \quad 12.12 \text{ } \text{ }$

| | |
|--|--|
| $4 \text{ l. in } 20 \text{ l.} = 5 \text{ mal}$ | $4 \text{ in } 20 = 5 \text{ mal}$ |
| $5 \text{ " in } 15 \text{ " } = 3 \text{ mal}$ | $7 \text{ in } 21 = 3 \text{ mal}$ |
| $2 \text{ " in } 12 \text{ " } = 6 \text{ mal}$ | $9 \text{ in } 54 = 6 \text{ mal}$ |
| $4 \text{ " in } 12 \text{ " } = 3 \text{ mal}$ | $8 \text{ in } 24 = 3 \text{ mal}$ |
| $3 \text{ " in } 9 \text{ " } = 3 \text{ mal} \checkmark$ | $10 \text{ in } 30 = 3 \text{ mal} \checkmark$ |
| $8 \text{ cm in } 32 \text{ cm} = 4 \text{ mal}$ | $60 \text{ cm} = 6 \cdot 10 \text{ cm}$ |
| $4 \text{ " in } 16 \text{ " } = 4 \text{ mal}$ | $90 \text{ cm} = 9 \cdot 10 \text{ cm}$ |
| $7 \text{ " in } 35 \text{ " } = 5 \text{ mal}$ | $40 \text{ cm} = 4 \cdot 10 \text{ cm}$ |
| $5 \text{ " in } 20 \text{ " } = 4 \text{ mal}$ | $70 \text{ cm} = 7 \cdot 10 \text{ cm}$ |
| $3 \text{ " in } 15 \text{ " } = 5 \text{ mal} \checkmark$ | $30 \text{ cm} = 3 \cdot 10 \text{ cm}$ |
| $9 \text{ in } 27 = 3 \text{ mal}$ | $100 \text{ cm} = 10 \cdot 10 \text{ cm}$ |
| $6 \text{ in } 36 = 6 \text{ mal}$ | $50 \text{ cm} = 5 \cdot 10 \text{ cm} \checkmark$ |
| $3 \text{ in } 18 = 6 \text{ mal}$ | $10 \text{ cm in } 40 \text{ cm} = 4 \text{ mal}$ |
| $2 \text{ in } 10 = 5 \text{ mal}$ | $10 \text{ cm in } 70 \text{ cm} = 7 \text{ mal}$ |
| $4 \text{ in } 24 = 6 \text{ mal} \checkmark$ | $10 \text{ cm in } 20 \text{ cm} = 2 \text{ mal}$ |
| | $10 \text{ cm in } 80 \text{ cm} = 8 \text{ mal}$ |
| | $10 \text{ cm in } 30 \text{ cm} = 3 \text{ mal}$ |
| | $10 \text{ cm in } 50 \text{ cm} = 5 \text{ mal}$ |
| | $10 \text{ cm in } 60 \text{ cm} = 6 \text{ mal} \checkmark$ |

| | |
|---|--|
| $30 \text{ cm} = 3 \cdot 10 \text{ cm}$ | $10 \text{ cm in } 40 = 4 \text{ mal}$ |
| $32 \text{ cm} = 3 \cdot 10 \text{ cm} + 2$ | $10 \text{ cm in } 48 = 4 \text{ mal R. 8}$ |
| $50 \text{ cm} = 5 \cdot 10 \text{ cm}$ | $10 \text{ cm in } 70 = 7 \text{ mal}$ |
| $57 \text{ cm} = 5 \cdot 10 \text{ cm} + 7$ | $10 \text{ " in } 78 = 7 \text{ mal R. 8}$ |
| $80 \text{ cm} = 8 \cdot 10 \text{ cm}$ | $10 \text{ " in } 20 = 2 \text{ mal}$ |
| $91 \text{ cm} = 9 \cdot 10 \text{ cm} + 1$ | $10 \text{ " in } 25 = 2 \text{ mal R. 5}$ |
| $80 \text{ cm} = 8 \cdot 10 \text{ cm} \checkmark$ | $10 \text{ " in } 60 = 6 \text{ mal} \checkmark$ |
| $10 \text{ in } 24 = 2 \text{ mal R. 4}$ | |
| $10 \text{ in } 36 = 3 \text{ mal R. 6}$ | |
| $10 \text{ in } 58 = 5 \text{ mal R. 8}$ | |
| $10 \text{ in } 72 = 7 \text{ mal R. 2}$ | |
| $10 \text{ in } 48 = 4 \text{ mal R. 8}$ | |
| $10 \text{ in } 95 = 9 \text{ mal R. 5}$ | |
| $10 \text{ in } 63 = 6 \text{ mal R. 3} \checkmark$ | |

Fehler: 0

| |
|--|
| $4 \text{ l in } 20 \text{ l} = 5 \text{ mal}$ |
| $5 \text{ l in } 15 \text{ l} = 3 \text{ mal}$ |
| $2 \text{ l in } 12 \text{ l} = 6 \text{ mal}$ |
| $4 \text{ l in } 12 \text{ l} = 3 \text{ mal}$ |
| $3 \text{ l in } 9 \text{ l} = 3 \text{ mal}$ |

Fehler: 0

| |
|---------------------------|
| $8 \text{ cm in } 32 = 4$ |
| $4 \text{ cm in } 16 = 4$ |
| $7 \text{ cm in } 35 = 5$ |
| $5 \text{ cm in } 20 = 4$ |
| $3 \text{ cm in } 15 = 5$ |

5 cm in 35 cm

Fehler: 0

- 5 cm in 35 cm = 7 mal; denn $5 \cdot 7 \text{ cm} = 35 \text{ cm}$ ✓ 15 cm = 3 · 5 cm ✓
- 5 cm in 10 cm = 2 mal; denn $5 \cdot 2 \text{ cm} = 10 \text{ cm}$ ✓ 45 cm = 9 · 5 cm ✓
- 5 cm in 50 cm = 10 mal; denn $5 \cdot 10 \text{ cm} = 50 \text{ cm}$ ✓ 30 cm = 6 · 5 cm ✓
- 5 cm in 15 cm = 3 mal; denn $5 \cdot 3 \text{ cm} = 15 \text{ cm}$ ✓ 10 cm = 2 · 5 cm ✓
- 5 cm in 30 cm = 6 mal; denn $5 \cdot 6 \text{ cm} = 30 \text{ cm}$ ✓ 25 cm = 5 · 5 cm ✓
- 5 cm in 45 cm = 9 mal; denn $5 \cdot 9 \text{ cm} = 45 \text{ cm}$ ✓ 50 cm = 10 · 5 cm ✓
- 5 cm in 20 cm = 4 mal; denn $5 \cdot 4 \text{ cm} = 20 \text{ cm}$ ✓ 35 cm = 7 · 5 cm ✓

Fehler: 0

- 1 · 8 = 8 40 cm = 8 · 5 cm ✓
- 2 · 8 = 16 42 cm = 8 · 5 cm + 2 ✓
- 3 · 8 = 24 15 cm = 3 · 5 cm ✓
- 4 · 8 = 32 18 cm = 3 · 5 cm + 3 ✓
- 5 · 8 = 40 35 cm = 7 · 5 cm ✓
- 6 · 8 = 48 36 cm = 7 · 5 cm + 1 ✓
- 7 · 8 = 56 20 cm = 4 · 5 cm ✓
- 8 · 8 = 64 24 cm = 4 · 5 cm + 4 ✓
- 9 · 8 = 72
- 10 · 8 = 80

- 5 cm in 30 cm = 6 mal
- 5 cm in 35 cm = 7 mal
- 5 cm in 10 cm = 2 mal
- 5 cm in 12 cm = 2 mal R. 2
- 5 cm in 45 cm = 9 mal
- 5 cm in 48 cm = 9 mal R. 3
- 5 cm in 15 cm = 3 mal
- 5 cm in 17 cm = 3 mal R. 2

Fehler: 0

$$\begin{array}{ll} 1 \cdot 6 = 6 & 10 \cdot 6 = 60 \\ 2 \cdot 6 = 12 & 9 \cdot 6 = 54 \\ 3 \cdot 6 = 18 & 8 \cdot 6 = 48 \\ 4 \cdot 6 = 24 & 7 \cdot 6 = 42 \\ 5 \cdot 6 = 30 & 6 \cdot 6 = 36 \\ 6 \cdot 6 = 36 & 5 \cdot 6 = 30 \\ 7 \cdot 6 = 42 & 4 \cdot 6 = 24 \\ 8 \cdot 6 = 48 & 3 \cdot 6 = 18 \\ 9 \cdot 6 = 54 & 2 \cdot 6 = 12 \\ 10 \cdot 6 = 60 & 1 \cdot 6 = 6 \end{array}$$

$$5 \text{ in } 13 = 2 \text{ mal R.3 } \checkmark$$

$$5 \text{ in } 32 = 6 \text{ mal R.2 } \checkmark$$

$$5 \text{ in } 23 = 4 \text{ mal R.3 } \checkmark$$

$$5 \text{ in } 42 = 8 \text{ mal R.2 } \checkmark$$

$$5 \text{ in } 24 = 4 \text{ mal R.4 } \checkmark$$

$$5 \text{ in } 9 = 1 \text{ mal R.4 } \checkmark$$

$$5 \text{ in } 19 = 3 \text{ mal R.4 } \checkmark$$

$$5 \text{ in } 38 = 7 \text{ mal R.3 } \checkmark$$

Fehler: 0

3. Rechnen

Astrid Pflüger

2. Klasse

80 g/qm HOLZFREI

Brunner  Hoff

Nr. 10

$$10 \text{ cm in } 30 \text{ cm} = 3 \text{ mal } \checkmark$$

$$10 \text{ cm in } 34 \text{ cm} = 3 \text{ mal R.4 } \checkmark$$

$$10 \text{ cm in } 80 \text{ cm} = 8 \text{ mal } \checkmark$$

$$10 \text{ cm in } 86 \text{ cm} = 8 \text{ mal R.6 } \checkmark$$

$$10 \text{ cm in } 68 \text{ cm} = 6 \text{ mal R.8 } \checkmark$$

$$10 \text{ cm in } 49 \text{ cm} = 4 \text{ mal R.9 } \checkmark$$

$$10 \text{ cm in } 27 \text{ cm} = 2 \text{ mal R.7 } \checkmark$$

$$10 \text{ cm in } 73 \text{ cm} = 7 \text{ mal R.3 } \checkmark$$

$$10 \text{ cm in } 55 \text{ cm} = 5 \text{ mal R.5 } \checkmark$$

Fehler: 0

$$5 \text{ cm in } 20 \text{ cm} = 4 \text{ mal}$$

$$5 \text{ cm in } 22 \text{ cm} = 4 \text{ mal R.2}$$

$$5 \text{ cm in } 40 \text{ cm} = 8 \text{ mal}$$

$$5 \text{ cm in } 44 \text{ cm} = 8 \text{ mal R.4}$$

$$5 \text{ cm in } 12 \text{ cm} = 2 \text{ mal R.2}$$

$$5 \text{ cm in } 36 \text{ cm} = 7 \text{ mal R.1}$$

$$5 \text{ cm in } 46 \text{ cm} = 9 \text{ mal R.1}$$

$$5 \text{ cm in } 28 \text{ cm} = 5 \text{ mal R.3}$$

$$5 \text{ cm in } 13 \text{ cm} = 2 \text{ mal R.3}$$

Fehler: 0

4.12.1962

4.12.1962

| | | |
|-------------|-------------|-------------|
| 1 · 4 = 4 | 10 · 4 = 40 | 11 · 3 = 33 |
| 2 · 4 = 8 | 9 · 4 = 36 | 12 · 3 = 36 |
| 3 · 4 = 12 | 8 · 4 = 32 | 13 · 3 = 39 |
| 4 · 4 = 16 | 7 · 4 = 28 | 14 · 3 = 42 |
| 5 · 4 = 20 | 6 · 4 = 24 | 15 · 3 = 45 |
| 6 · 4 = 24 | 5 · 4 = 20 | 16 · 3 = 48 |
| 7 · 4 = 28 | 4 · 4 = 16 | 17 · 3 = 51 |
| 8 · 4 = 32 | 3 · 4 = 12 | 18 · 3 = 54 |
| 9 · 4 = 36 | 2 · 4 = 8 | 19 · 3 = 57 |
| 10 · 4 = 40 | 1 · 4 = 4 | 10 · 3 = 30 |

| |
|-------------|
| 10 · 3 = 30 |
| 9 · 3 = 27 |
| 8 · 3 = 24 |
| 7 · 3 = 21 |
| 6 · 3 = 18 |
| 5 · 3 = 15 |
| 4 · 3 = 12 |
| 3 · 3 = 9 |
| 2 · 3 = 6 |
| 1 · 3 = 3 |

| | |
|------------------|--------------------|
| 2 in 8 = 4 mal | 2 in 2 = 1 mal ✓ |
| 2 in 6 = 3 mal | 2 in 4 = 2 mal ✓ |
| 2 in 4 = 2 mal | 2 in 6 = 3 mal ✓ |
| 2 in 2 = 1 mal ✓ | 2 in 8 = 4 mal ✓ |
| 2 in 2 = 1 mal | 2 in 10 = 5 mal ✓ |
| 2 in 4 = 2 mal | 2 in 12 = 6 mal ✓ |
| 2 in 6 = 3 mal | 2 in 14 = 7 mal ✓ |
| 2 in 8 = 4 mal | 2 in 16 = 8 mal ✓ |
| 2 in 10 = 5 mal | 2 in 18 = 9 mal ✓ |
| 2 in 12 = 6 mal | 2 in 20 = 10 mal ✓ |
| 2 in 14 = 7 mal | |
| 2 in 16 = 8 mal | |
| 2 in 18 = 9 mal | |
| 2 in 20 = 10 mal | |
| 2 in 2 = 1 mal | |
| 2 in 4 = 2 mal | |
| 2 in 6 = 3 mal | |
| 2 in 8 = 4 mal | |
| 2 in 10 = 5 mal | |
| 2 in 12 = 6 mal | |
| 2 in 14 = 7 mal | |
| 2 in 16 = 8 mal | |
| 2 in 18 = 9 mal | |
| 2 in 20 = 10 mal | |

Fehler: 0

5.12.1962

$2 \text{ in } 10 = 5 \text{ mal}$
 $5 \text{ in } 10 = 2 \text{ mal}$
 $10 \text{ in } 10 = 1 \text{ mal}$
 $2 \text{ in } 20 = 10 \text{ mal}$
 $5 \text{ in } 20 = 4 \text{ mal}$
 $10 \text{ in } 20 = 2 \text{ mal}$
 $5 \text{ in } 30 = 6 \text{ mal}$
 $10 \text{ in } 30 = 3 \text{ mal}$

($2 \text{ in } 8 = 4 \text{ mal}$)

$10 = 5 \cdot 2$
 $11 = 5 \cdot 2 + 1$
 $8 = 4 \cdot 2$
 $9 = 4 \cdot 2 + 1$
 $14 = 7 \cdot 2$
 $15 = 7 \cdot 2 + 1$
 $12 = 6 \cdot 2$
 $13 = 6 \cdot 2 + 1$

$2 \text{ in } 8 = 4 \text{ mal}$
 $5 \text{ in } 8 = 1 \text{ mal R.3}$
 $2 \text{ in } 12 = 6 \text{ mal}$
 $5 \text{ in } 12 = 2 \text{ mal R.2}$
 $2 \text{ in } 18 = 9 \text{ mal}$
 $5 \text{ in } 18 = 3 \text{ mal R.3}$
 $2 \text{ in } 14 = 7 \text{ mal R.1}$
 $5 \text{ in } 14 = 2 \text{ mal R.4}$

$2 \text{ in } 12 = 6 \text{ mal}$
 $2 \text{ in } 13 = 6 \text{ mal Rest 1}$
 $2 \text{ in } 4 = 2 \text{ mal}$
 $2 \text{ in } 5 = 2 \text{ mal Rest 1}$
 $2 \text{ in } 8 = 4 \text{ mal}$
 $2 \text{ in } 9 = 4 \text{ mal Rest 1}$
 $2 \text{ in } 18 = 9 \text{ mal}$
 $2 \text{ in } 19 = 9 \text{ mal Rest 1}$

$3 \text{ in } 3 = 1 \text{ mal}$
 $3 \text{ in } 6 = 2 \text{ mal}$
 $3 \text{ in } 9 = 3 \text{ mal}$
 $3 \text{ in } 12 = 4 \text{ mal}$
 $3 \text{ in } 15 = 5 \text{ mal}$
 $3 \text{ in } 18 = 6 \text{ mal}$
 $3 \text{ in } 21 = 7 \text{ mal}$
 $3 \text{ in } 24 = 8 \text{ mal}$
 $3 \text{ in } 27 = 9 \text{ mal}$
 $3 \text{ in } 30 = 10 \text{ mal}$

5.12.62

5.12.1962

Nr. 10

$2 \text{ in } 11 = 5 \text{ mal R.1}$

$2 \text{ in } 17 = 8 \text{ mal R.1}$

$5 \text{ in } 12 = 2 \text{ mal R.2}$

$2 \text{ in } 12 = 6 \text{ mal}$

$10 \text{ in } 18 = 1 \text{ mal R.8}$

$2 \text{ in } 18 = 9 \text{ mal}$

$10 \text{ in } 13 = 1 \text{ mal R.3}$

$2 \text{ in } 13 = 6 \text{ mal R.1}$

Nr. 12

$24 = 8 \cdot 3$

$27 = 9 \cdot 3$

$9 = 3 \cdot 3$

$21 = 7 \cdot 3$

$30 = 10 \cdot 3$

$18 = 6 \cdot 3$

$12 = 4 \cdot 3$

Fehler: 0 ✓

15.)

$3 \text{ in } 12 = 4 \text{ mal}$

$2 \text{ in } 12 = 6 \text{ mal}$

$3 \text{ in } 15 = 5 \text{ mal}$

$5 \text{ in } 15 = 3 \text{ mal}$

$3 \text{ in } 18 = 6 \text{ mal}$

$2 \text{ in } 18 = 9 \text{ mal}$

$3 \text{ in } 6 = 2 \text{ mal}$

$15 = 5 \cdot 3$

$17 = 5 \cdot 3 + 2$

$24 = 8 \cdot 3$

$25 = 8 \cdot 3 + 1$

$11 = 3 \cdot 3 + 2$

$26 = 8 \cdot 3 + 2$

$8 = 2 \cdot 3 + 2$

18.)

$3 \text{ in } 12 = 4 \text{ mal}$

$3 \text{ in } 14 = 4 \text{ mal, Rest 2}$

$3 \text{ in } 27 = 9 \text{ mal}$

$3 \text{ in } 29 = 9 \text{ mal Rest 2}$

$3 \text{ in } 19 = 6 \text{ mal Rest 1}$

$3 \text{ in } 10 = 3 \text{ mal Rest 1}$

$3 \text{ in } 7 = 2 \text{ mal Rest 1}$

$1 \cdot 7 = 7$

$2 \cdot 7 = 14$

$3 \cdot 7 = 21$

$4 \cdot 7 = 28$

$5 \cdot 7 = 35$

$6 \cdot 7 = 42$

$7 \cdot 7 = 49$

$8 \cdot 7 = 56$

$9 \cdot 7 = 63$

$10 \cdot 7 = 70$

$10 \cdot 7 = 70$

$9 \cdot 7 = 63$

$8 \cdot 7 = 56$

$7 \cdot 7 = 49$

$6 \cdot 7 = 42$

$5 \cdot 7 = 35$

$4 \cdot 7 = 28$

$3 \cdot 7 = 21$

$2 \cdot 7 = 14$

$1 \cdot 7 = 7$

6.12.1962

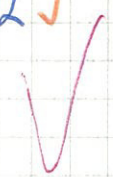
22.)

$$\begin{array}{l}
 2 \text{ in } 9 = 4 \text{ mal R.1} \checkmark \quad 16 = 4 \cdot 4 \checkmark \\
 3 \text{ in } 9 = 3 \text{ mal} \checkmark \quad 32 = 8 \cdot 4 \checkmark \\
 5 \text{ in } 9 = 1 \text{ mal R.4} \checkmark \quad 8 = 2 \cdot 4 \checkmark \\
 2 \text{ in } 10 = 5 \text{ mal} \checkmark \quad 24 = 6 \cdot 4 \checkmark \\
 3 \text{ in } 10 = 3 \text{ mal R.1} \checkmark \quad 36 = 9 \cdot 4 \checkmark \\
 5 \text{ in } 10 = 2 \text{ mal} \checkmark \quad 12 = 3 \cdot 4 \checkmark \\
 3 \text{ in } 17 = 5 \text{ mal R.2} \checkmark \quad 28 = 7 \cdot 4 \checkmark
 \end{array}$$

23.)

$$\begin{array}{l}
 4 \text{ in } 20 = 5 \text{ mal; denn } 5 \cdot 4 = 20 \checkmark \\
 4 \text{ in } 28 = 7 \text{ mal; denn } 7 \cdot 4 = 28 \checkmark \\
 4 \text{ in } 4 = 1 \text{ mal; denn } 1 \cdot 4 = 4 \checkmark \\
 4 \text{ in } 16 = 4 \text{ mal; denn } 4 \cdot 4 = 16 \checkmark \\
 4 \text{ in } 8 = 2 \text{ mal; denn } 2 \cdot 4 = 8 \checkmark \\
 4 \text{ in } 32 = 8 \text{ mal; denn } 8 \cdot 4 = 32 \checkmark \\
 4 \text{ in } 12 = 3 \text{ mal; denn } 3 \cdot 4 = 12 \checkmark
 \end{array}$$

Fehler: 0



$$\begin{array}{l}
 3 \text{ in } 18 = 6 \text{ mal; denn } 6 \cdot 3 = 18 \quad 19.) \\
 3 \text{ in } 30 = 10 \text{ mal; denn } 10 \cdot 3 = 30 \quad 2 \text{ in } 8 = 4 \text{ mal} \\
 3 \text{ in } 21 = 7 \text{ mal; denn } 7 \cdot 3 = 21 \quad 3 \text{ in } 8 = 2 \text{ mal R.2} \\
 3 \text{ in } 15 = 5 \text{ mal; denn } 5 \cdot 3 = 15 \quad 3 \text{ in } 14 = 4 \text{ mal R.2} \\
 3 \text{ in } 9 = 3 \text{ mal; denn } 3 \cdot 3 = 9 \quad 2 \text{ in } 14 = 7 \text{ mal} \\
 3 \text{ in } 12 = 4 \text{ mal; denn } 4 \cdot 3 = 12 \quad 2 \text{ in } 15 = 7 \text{ mal R.1} \\
 3 \text{ in } 24 = 8 \text{ mal; denn } 8 \cdot 3 = 24 \quad 3 \text{ in } 26 = 8 \text{ mal R.2} \\
 \quad \quad \quad \quad \quad \quad \quad \quad \quad \quad 3 \text{ in } 5 = 1 \text{ mal R.2}
 \end{array}$$

$4 \text{ in } 4 = 1 \text{ mal} \quad 24) 4 \text{ in } 40 = 10 \text{ mal}$

$4 \text{ in } 8 = 2 \text{ mal} \quad 4 \text{ in } 36 = 9 \text{ mal}$

$4 \text{ in } 12 = 3 \text{ mal} \quad 4 \text{ in } 32 = 8 \text{ mal}$

$4 \text{ in } 16 = 4 \text{ mal} \quad 4 \text{ in } 28 = 7 \text{ mal}$

$4 \text{ in } 20 = 5 \text{ mal} \quad 4 \text{ in } 24 = 6 \text{ mal}$

$4 \text{ in } 24 = 6 \text{ mal} \quad 4 \text{ in } 20 = 5 \text{ mal}$

$4 \text{ in } 28 = 7 \text{ mal} \quad 4 \text{ in } 16 = 4 \text{ mal}$

$4 \text{ in } 32 = 8 \text{ mal} \quad 4 \text{ in } 12 = 3 \text{ mal}$

$4 \text{ in } 36 = 9 \text{ mal} \quad 4 \text{ in } 8 = 2 \text{ mal}$

$4 \text{ in } 40 = 10 \text{ mal} \quad 4 \text{ in } 4 = 1 \text{ mal}$

25.)

$2 \text{ in } 8 = 4 \text{ mal}$

$4 \text{ in } 8 = 2 \text{ mal}$

$2 \text{ in } 16 = 8 \text{ mal}$

$4 \text{ in } 16 = 4 \text{ mal}$

$2 \text{ in } 20 = 10 \text{ mal}$

$4 \text{ in } 20 = 5 \text{ mal}$

$5 \text{ in } 20 = 4 \text{ mal}$

29.)

$2 \text{ in } 16 = 8 \text{ mal}$

$3 \text{ in } 18 = 6 \text{ mal}$

$4 \text{ in } 16 = 4 \text{ mal}$

$3 \text{ in } 28 = 9 \text{ mal R.1}$

$4 \text{ in } 28 = 7 \text{ mal}$

$5 \text{ in } 28 = 5 \text{ mal R.3}$

$10 \text{ in } 28 = 2 \text{ mal R.8}$

28.)

$4 \text{ in } 32 = 8 \text{ mal} \checkmark$

$4 \text{ in } 35 = 8 \text{ mal, Rest 3} \checkmark$

$4 \text{ in } 17 = 4 \text{ mal Rest 1} \checkmark$

$4 \text{ in } 29 = 7 \text{ mal (Rest) Rest 1} \checkmark$

$4 \text{ in } 37 = 9 \text{ mal Rest 1} \checkmark$

$4 \text{ in } 19 = 4 \text{ mal Rest 3} \checkmark$

$4 \text{ in } 26 = 6 \text{ mal Rest 2} \checkmark$

Fehler: 0

30.)

$4 \text{ in } 39 = 9 \text{ mal, Rest 3} \checkmark$

$3 \text{ in } 26 = 8 \text{ mal, Rest 2} \checkmark$

$5 \text{ in } 37 = 7 \text{ mal, Rest 2} \checkmark$

$4 \text{ in } 23 = 5 \text{ mal, Rest 3} \checkmark$

$2 \text{ in } 15 = 7 \text{ mal, Rest 1} \checkmark$

$4 \text{ in } 20 = 5 \text{ mal} \checkmark$

$5 \text{ in } 20 = 4 \text{ mal} \checkmark$

Fehler: 0

31.)

$3 \text{ in } 27 = 9 \text{ mal} \checkmark$

$3 \text{ in } 13 = 4 \text{ mal R.1} \checkmark$

$3 \text{ in } 18 = 6 \text{ mal} \checkmark$

$3 \text{ in } 25 = 8 \text{ mal R.1} \checkmark$

$3 \text{ in } 21 = 7 \text{ mal} \checkmark$

$3 \text{ in } 11 = 3 \text{ mal R.2} \checkmark$

$3 \text{ in } 8 = 2 \text{ mal R.2} \checkmark$

$3 \text{ in } 17 = 5 \text{ mal R.2} \checkmark$

$3 \text{ in } 30 = 10 \text{ mal} \checkmark$

$3 \text{ in } 5 = 1 \text{ mal R.2} \checkmark$

$3 \text{ in } 23 = 7 \text{ mal R.2} \checkmark$

$4 \text{ in } 32 = 8 \text{ mal} \checkmark$

$4 \text{ in } 23 = 5 \text{ mal R.3} \checkmark$

$4 \text{ in } 10 = 2 \text{ mal R.2} \checkmark$

$4 \text{ in } 35 = 8 \text{ mal R.3} \checkmark$

$4 \text{ in } 9 = 2 \text{ mal R.1} \checkmark$

$4 \text{ in } 25 = 6 \text{ mal R.1} \checkmark$

$4 \text{ in } 6 = 1 \text{ mal R.2} \checkmark$

$4 \text{ in } 21 = 5 \text{ mal R.1} \checkmark$

$4 \text{ in } 38 = 9 \text{ mal R.2} \checkmark$

$4 \text{ in } 15 = 3 \text{ mal R.3} \checkmark$

$4 \text{ in } 40 = 10 \text{ mal} \checkmark \checkmark$

Fehler: 0

$18 = 3 \cdot 6$

$42 = 7 \cdot 6$

$60 = 10 \cdot 6$

$36 = 6 \cdot 6$

$12 = 2 \cdot 6$

$30 = 5 \cdot 6$

$6 = 1 \cdot 6$

$48 = 8 \cdot 6$

$6 \text{ in } 36 = 6 \text{ mal; denn } 6 \cdot 6 = 36$

$6 \text{ in } 12 = 2 \text{ mal; denn } 2 \cdot 6 = 12$

$6 \text{ in } 48 = 8 \text{ mal; denn } 8 \cdot 6 = 48$

$6 \text{ in } 6 = 1 \text{ mal; denn } 1 \cdot 6 = 6$

$6 \text{ in } 24 = 4 \text{ mal; denn } 4 \cdot 6 = 24$

$6 \text{ in } 60 = 10 \text{ mal; denn } 10 \cdot 6 = 60$

$6 \text{ in } 42 = 7 \text{ mal; denn } 7 \cdot 6 = 42$

$6 \text{ in } 18 = 3 \text{ mal; denn } 3 \cdot 6 = 18$

$6 \text{ in } 6 = 1 \text{ mal} \quad 6 \text{ in } 60 = 10 \text{ mal}$

$6 \text{ in } 12 = 2 \text{ mal} \quad 6 \text{ in } 54 = 9 \text{ mal}$

$6 \text{ in } 18 = 3 \text{ mal} \quad 6 \text{ in } 48 = 8 \text{ mal}$

$6 \text{ in } 24 = 4 \text{ mal} \quad 6 \text{ in } 42 = 7 \text{ mal}$

$6 \text{ in } 30 = 5 \text{ mal} \quad 6 \text{ in } 36 = 6 \text{ mal}$

$6 \text{ in } 36 = 6 \text{ mal} \quad 6 \text{ in } 30 = 5 \text{ mal}$

$6 \text{ in } 42 = 7 \text{ mal} \quad 6 \text{ in } 24 = 4 \text{ mal}$

$6 \text{ in } 48 = 8 \text{ mal} \quad 6 \text{ in } 18 = 3 \text{ mal}$

$6 \text{ in } 54 = 9 \text{ mal} \quad 6 \text{ in } 12 = 2 \text{ mal}$

$6 \text{ in } 60 = 10 \text{ mal} \quad 6 \text{ in } 6 = 1 \text{ mal}$

11.12.1962

6 in 12 = 2 mal $12 = 2 \cdot 6$

4 in 12 = 3 mal $15 = 2 \cdot 6 + 3$

3 in 12 = 4 mal $36 = 6 \cdot 6$

2 in 12 = 6 mal $40 = 6 \cdot 6 + 4$

6 in 18 = 3 mal $48 = 8 \cdot 6$

3 in 18 = 6 mal $50 = 8 \cdot 6 + 2$

6 in 36 = 6 mal $24 = 4 \cdot 6$

4 in 36 = 9 mal $25 = 4 \cdot 6 + 1$

6 in 54 = 9 mal denn $9 \cdot 6 = 54$

6 in 55 = 9 mal R.1 denn $9 \cdot 6 = 54 + 1$

6 in 18 = 3 mal denn $3 \cdot 6 = 18$

6 in 20 = 3 mal R.2 denn $3 \cdot 6 = 18 + 2$

6 in 54 = 9 mal denn $9 \cdot 6 = 54$

6 in 58 = 9 mal R.4 denn $9 \cdot 6 = 54 + 4$

6 in 30 = 5 mal denn $5 \cdot 6 = 30$

6 in 35 = 5 mal R.5 denn $5 \cdot 6 = 30 + 5$

Fehler

9)

6 in 24 = 4 mal

5 in 24 = 4 mal R.4

4 in 24 = 6 mal

3 in 24 = 8 mal

6 in 30 = 5 mal

5 in 30 = 6 mal

4 in 30 = 7 mal R.2

3 in 30 = 10 mal

6 in 20 = 3 mal R.2

6 in 25 = 4 mal R.1

6 in 28 = 4 mal R.4

6 in 42 = 7 mal

6 in 45 = ~~8~~ mal R.3

6 in 50 = 8 mal R.2

6 in 32 = 5 mal R.2

6 in 36 = 6 mal

6 in 20 = 3 mal R.2

6 in 25 = 4 mal R.1

6 in 28 = 4 mal R.4

6 in 42 = 7 mal

6 in 45 = 7 mal R.3

6 in 50 = 8 mal R.2

6 in 32 = 5 mal R.2

6 in 36 = 6 mal

$6 \text{ in } 24 = 4 \text{ mal } \checkmark$

$6 \text{ in } 20 = 3 \text{ mal R.2 } \checkmark$

$8 \text{ in } 48 = 6 \text{ mal, denn } 6 \cdot 8 = 48$

$5 \text{ in } 24 = 4 \text{ mal R.4 } \checkmark$

$6 \text{ in } 25 = 4 \text{ mal R.1 } \checkmark$

$8 \text{ in } 72 = 9 \text{ mal, denn } 9 \cdot 8 = 72$

$4 \text{ in } 24 = 6 \text{ mal } \checkmark$

$6 \text{ in } 28 = 4 \text{ mal R.4 } \checkmark$

$8 \text{ in } 24 = 3 \text{ mal, denn } 3 \cdot 8 = 24$

$3 \text{ in } 24 = 8 \text{ mal } \checkmark$

$6 \text{ in } 42 = 7 \text{ mal } \checkmark$

$8 \text{ in } 56 = 7 \text{ mal, denn } 7 \cdot 8 = 56$

$6 \text{ in } 30 = 5 \text{ mal } \checkmark$

$6 \text{ in } 45 = 7 \text{ mal R.3 } \checkmark$

$8 \text{ in } 16 = 2 \text{ mal, denn } 2 \cdot 8 = 16$

$5 \text{ in } 30 = 6 \text{ mal } \checkmark$

$6 \text{ in } 50 = 8 \text{ mal R.2 } \checkmark$

$8 \text{ in } 40 = 5 \text{ mal, denn } 5 \cdot 8 = 40$

$4 \text{ in } 30 = 7 \text{ mal R.2 } \checkmark$

$6 \text{ in } 32 = 5 \text{ mal R.2 } \checkmark$

$8 \text{ in } 64 = 8 \text{ mal, denn } 8 \cdot 8 = 64$

$3 \text{ in } 30 = 10 \text{ mal } \checkmark$

$6 \text{ in } 36 = 6 \text{ mal } \checkmark$

$8 \text{ in } 8 = 1 \text{ mal, denn } 1 \cdot 8 = 8$

Fehler: 0

$24 = 3 \cdot 8$

$40 = 5 \cdot 8$

$56 = 7 \cdot 8$

$16 = 2 \cdot 8$

$80 = 10 \cdot 8$

$48 = 6 \cdot 8$

$8 = 1 \cdot 8$

$64 = 8 \cdot 8$

$8 \text{ in } 80 = 10 \text{ mal, denn } 10 \cdot 8 = 80$

$8 \text{ in } 32 = 4 \text{ mal, denn } 4 \cdot 8 = 32$

$8 \text{ in } 8 = 1 \text{ mal}$

$8 \text{ in } 80 = 10 \text{ mal}$

$8 \text{ in } 16 = 2 \text{ mal}$

$8 \text{ in } 72 = 9 \text{ mal}$

$8 \text{ in } 24 = 3 \text{ mal}$

$8 \text{ in } 64 = 8 \text{ mal}$

$8 \text{ in } 32 = 4 \text{ mal}$

$8 \text{ in } 56 = 7 \text{ mal}$

$8 \text{ in } 40 = 5 \text{ mal}$

$8 \text{ in } 48 = 6 \text{ mal}$

$8 \text{ in } 48 = 6 \text{ mal}$

$8 \text{ in } 40 = 5 \text{ mal}$

$8 \text{ in } 56 = 7 \text{ mal}$

$8 \text{ in } 32 = 4 \text{ mal}$

$8 \text{ in } 64 = 8 \text{ mal}$

$8 \text{ in } 24 = 3 \text{ mal}$

$8 \text{ in } 72 = 9 \text{ mal}$

$8 \text{ in } 16 = 2 \text{ mal}$

$8 \text{ in } 80 = 10 \text{ mal}$

$8 \text{ in } 8 = 1 \text{ mal}$

$$32 = 4 \cdot 8$$

$$34 = 4 \cdot 8 + 2$$

$$48 = 6 \cdot 8$$

$$50 = 6 \cdot 8 + 2$$

$$16 = 2 \cdot 8$$

$$20 = 2 \cdot 8 + 4$$

$$72 = 9 \cdot 8$$

$$75 = 9 \cdot 8 + 3$$

30)

$$9 \text{ in } 27 = 3 \text{ mal, denn } 3 \cdot 9 = 27$$

$$9 \text{ in } 30 = 3 \text{ mal, denn } 3 \cdot 9 = 27 + 3$$

$$9 \text{ in } 54 = 6 \text{ mal, denn } 6 \cdot 9 = 54$$

$$9 \text{ in } 60 = 6 \text{ mal, denn } 6 \cdot 9 = 54 + 6$$

$$9 \text{ in } 9 = 1 \text{ mal, denn } 1 \cdot 9 = 9$$

$$9 \text{ in } 15 = 1 \text{ mal, denn } 1 \cdot 9 = 9 + 6$$

$$9 \text{ in } 63 = 7 \text{ mal, denn } 7 \cdot 9 = 63$$

$$9 \text{ in } 70 = 7 \text{ mal, denn } 7 \cdot 9 = 63 + 7$$

Fehler: 0

$$9 \text{ in } 18 = 2 \text{ mal}$$

$$9 \text{ in } 24 = 2 \text{ mal R. 6}$$

$$3 \text{ in } 24 = 8 \text{ mal}$$

$$4 \text{ in } 24 = 6 \text{ mal}$$

$$5 \text{ in } 24 = 4 \text{ mal R. 4}$$

$$6 \text{ in } 24 = 4 \text{ mal}$$

$$8 \text{ in } 24 = 3 \text{ mal}$$

$$10 \text{ in } 24 = 2 \text{ mal R. 4}$$

Fehler: 0

1)

$$9 \text{ in } 70 = 7 \text{ mal R. 7}$$

$$39 + 18 = 57$$

$$9 \text{ in } 72 = 8 \text{ mal}$$

$$17 + 18 = 35$$

$$9 \text{ in } 75 = 8 \text{ mal R. 3}$$

$$26 + 18 = 44$$

$$9 \text{ in } 80 = 8 \text{ mal R. 8}$$

$$45 + 18 = 63$$

$$9 \text{ in } 81 = 9 \text{ mal}$$

$$19 + 18 = 37$$

$$9 \text{ in } 85 = 9 \text{ mal R. 4}$$

$$28 + 18 = 46$$

$$9 \text{ in } 90 = 10 \text{ mal}$$

$$56 + 18 = 74$$

$$9 \text{ in } 94 = 10 \text{ mal R. 4}$$

$$37 + 18 = 55$$

$$46 + 18 = 64$$

$$39 + 27 =$$

$$17 + 27 =$$

$$26 + 27 =$$

$$45 + 27 =$$

$$19 + 27 =$$

$$28 + 27 =$$

1.)
 $39 + 18 = 57$

$17 + 18 = 35$

$26 + 18 = 44$

$45 + 18 = 63$

$19 + 18 = 37$

$28 + 18 = 46$

$56 + 18 = 74$

$37 + 18 = 55$

$46 + 18 = 64$

1.)
 $39 + 27 = 66$

$17 + 27 = 44$

$26 + 27 = 53$

$45 + 27 = 72$

$19 + 27 = 46$

$28 + 27 = 55$

$56 + 27 = 83$

$37 + 27 = 64$

$46 + 27 = 73$

32.)

$9 \text{ in } 70 = 7 \text{ mal R.7}$

$9 \text{ in } 72 = 8 \text{ mal}$

$9 \text{ in } 75 = 8 \text{ mal R.3}$

$9 \text{ in } 80 = 8 \text{ mal R.8}$

$9 \text{ in } 81 = 9 \text{ mal}$

$9 \text{ in } 85 = 9 \text{ mal R.4}$

$9 \text{ in } 90 = 10 \text{ mal}$

$9 \text{ in } 94 = 10 \text{ mal R.4}$

Fehler:

$1 \cdot 9 = 9$

$2 \cdot 9 = 18$

$3 \cdot 9 = 27$

$4 \cdot 9 = 36$

$5 \cdot 9 = 45$

$6 \cdot 9 = 54$

$7 \cdot 9 = 63$

$8 \cdot 9 = 72$

$9 \cdot 9 = 81$

$10 \cdot 9 = 90$

$10 \cdot 9 = 90$

$9 \cdot 9 = 81$

$8 \cdot 9 = 72$

$7 \cdot 9 = 63$

$6 \cdot 9 = 54$

$5 \cdot 9 = 45$

$4 \cdot 9 = 36$

$3 \cdot 9 = 27$

$2 \cdot 9 = 18$

$1 \cdot 9 = 9$

$39 + 36 = 75$

$17 + 36 = 53$

$26 + 36 = 62$

$45 + 36 = 81$

$19 + 36 = 55$

$28 + 36 = 64$

$56 + 36 = 92$

$37 + 36 = 73$

$46 + 36 = 82$

$39 + 44 = 83$

$17 + 44 = 61$

$26 + 44 = 70$

$45 + 44 = 89$

$19 + 44 = 63$

$28 + 44 = 72$

$56 + 44 = 100$

$37 + 44 = 81$

$46 + 44 = 90$

Fehler: ✓

7 in 35 = 5 mal; denn $5 \cdot 7 = 35$
7 in 7 = 1 mal; denn $1 \cdot 7 = 7$
7 in 70 = 10 mal; denn $10 \cdot 7 = 70$
7 in 42 = 6 mal; denn $6 \cdot 7 = 42$
7 in 14 = 2 mal; denn $2 \cdot 7 = 14$
7 in 49 = 7 mal; denn $7 \cdot 7 = 49$
7 in 63 = 9 mal; denn $9 \cdot 7 = 63$
7 in 21 = 3 mal; denn $3 \cdot 7 = 21$

7 in 21 = 3 mal
3 in 21 = 7 mal
7 in 35 = 5 mal
5 in 35 = 7 mal
7 in 42 = 6 mal
6 in 42 = 7 mal
7 in 56 = 8 mal
8 in 56 = 7 mal

Fehler:

7 in 21 = 3 mal
3 in 21 = 7 mal
7 in 35 = 5 mal
5 in 35 = 7 mal
7 in 42 = 6 mal
6 in 42 = 7 mal
7 in 56 = 8 mal
8 in 56 = 7 mal

$1 \cdot 7 = 7$
 $2 \cdot 7 = 14$
 $3 \cdot 7 = 21$
 $4 \cdot 7 = 28$
 $5 \cdot 7 = 35$
 $6 \cdot 7 = 42$
 $7 \cdot 7 = 49$
 $8 \cdot 7 = 56$
 $9 \cdot 7 = 63$
 $10 \cdot 7 = 70$

7 in 21 = 3 mal
7 in 25 = 3 mal R.4
7 in 14 = 2 mal
7 in 20 = 2 mal R.6
7 in 7 = 1 mal
7 in 10 = 1 mal R.3
7 in 28 = 4 mal
7 in 30 = 4 mal R.2

$1 \cdot 7 = 7$
 $2 \cdot 7 = 14$
 $3 \cdot 7 = 21$
 $4 \cdot 7 = 28$
 $5 \cdot 7 = 35$
 $6 \cdot 7 = 42$
 $7 \cdot 7 = 49$
 $8 \cdot 7 = 56$
 $9 \cdot 7 = 63$
 $10 \cdot 7 = 70$

3.)

$35Tg. = 5Wch.$ $35Tg. = 5Wch. \checkmark$
 $49Tg. = 7Wch.$ $49Tg. = 7Wch. \checkmark$
 $21Tg. = 3Wch.$ $21Tg. = 3Wch. \checkmark$
 $63Tg. = 9Wch.$ $63Tg. = 9Wch. \checkmark$
 $28Tg. = 4Wch.$ $28Tg. = 4Wch. \checkmark$
 $42Tg. = 6Wch.$ $42Tg. = 6Wch. \checkmark$
 $56Tg. = 8Wch.$ $56Tg. = 8Wch. \checkmark$
 $70Tg. = 10Wch.$ $70Tg. = 10Wch. \checkmark$

$42Tg. = 6Wch. \checkmark$
 $45Tg. = 6Wch. + 3Tg. \checkmark$
 $21Tg. = 3Wch. \checkmark$
 $25Tg. = 3Wch. + 4Tg. \checkmark$
 $49Tg. = 7Wch. \checkmark$
 $50Tg. = 7Wch. + 1Tg. \checkmark$
 $63Tg. = 9Wch. \checkmark$
 $65Tg. = 9Wch. + 2Tg. \checkmark$

Fehler: 0

$4 \text{ in } 28 = 7 \text{ mal}$ $7 \text{ in } 35 = 5 \text{ mal}$
 $7 \text{ in } 28 = 4 \text{ mal}$ $7 \text{ in } 36 = 5 \text{ mal R.1}$
 $2 \text{ in } 14 = 7 \text{ mal}$ $7 \text{ in } 37 = 5 \text{ mal R.2}$
 $7 \text{ in } 14 = 2 \text{ mal}$ $7 \text{ in } 38 = 5 \text{ mal R.3}$
 $9 \text{ in } 63 = 7 \text{ mal}$ $7 \text{ in } 39 = 5 \text{ mal R.4}$
 $7 \text{ in } 63 = 9 \text{ mal}$ $7 \text{ in } 40 = 5 \text{ mal R.5}$
 $7 \text{ in } 49 = 7 \text{ mal}$ $7 \text{ in } 41 = 5 \text{ mal R.6}$
 $7 \text{ in } 70 = 10 \text{ mal}$ $7 \text{ in } 42 = 6 \text{ mal}$

$7 \text{ in } 34 = 4 \text{ mal R.6}$
 $7 \text{ in } 43 = 6 \text{ mal R.1}$
 $7 \text{ in } 26 = 3 \text{ mal R.5}$
 $7 \text{ in } 62 = 8 \text{ mal R.6}$
 $7 \text{ in } 45 = 6 \text{ mal R.3}$
 $7 \text{ in } 54 = 7 \text{ mal R.5}$
 $7 \text{ in } 17 = 2 \text{ mal R.3}$
 $7 \text{ in } 71 = 10 \text{ mal R.1}$
 $7 \text{ in } 23 = 3 \text{ mal R.2}$
 $7 \text{ in } 32 = 4 \text{ mal R.4}$

$$7 \text{ in } 35 = 5 \text{ mal}$$

$$7 \text{ in } 36 = 5 \text{ mal R.1}$$

$$7 \text{ in } 37 = 5 \text{ mal R.1}$$

$$7 \text{ in } 38 = 5 \text{ mal R.3}$$

$$7 \text{ in } 39 = 5 \text{ mal R.4}$$

$$7 \text{ in } 40 = 5 \text{ mal R.5}$$

$$7 \text{ in } 41 = 5 \text{ mal R.6}$$

$$7 \text{ in } 42 = 6 \text{ mal}$$

$$7 \text{ in } 34 = 4 \text{ mal R.6}$$

$$7 \text{ in } 43 = 6 \text{ mal R.1}$$

$$7 \text{ in } 26 = 3 \text{ mal R.5}$$

$$7 \text{ in } 62 = 8 \text{ mal R.6}$$

$$7 \text{ in } 45 = 6 \text{ mal R.3}$$

$$7 \text{ in } 54 = 7 \text{ mal R.5}$$

$$7 \text{ in } 17 = 2 \text{ mal R.3}$$

$$7 \text{ in } 71 = 10 \text{ mal R.1}$$

$$7 \text{ in } 23 = 3 \text{ mal R.2}$$

$$7 \text{ in } 32 = 4 \text{ mal R.4}$$

$$421 \text{ g.} = 6 \text{ Wch.} \checkmark$$

$$45 \text{ Tg.} = 6 \text{ Wch.} + 3 \text{ Tg.} \checkmark$$

$$21 \text{ Tg.} = 3 \text{ Wch} \checkmark$$

$$25 \text{ Tg.} = 3 \text{ Wch} + 4 \text{ Tg.} \checkmark$$

$$49 \text{ Tg.} = 7 \text{ Wch} \checkmark$$

$$50 \text{ Tg.} = 7 \text{ Wch} + 1 \text{ Tg.} \checkmark$$

$$63 \text{ Tg.} = 9 \text{ Wch} \checkmark$$

$$65 \text{ Tg.} = 9 \text{ Wch} + 2 \text{ Tg.} \checkmark$$

$$8 \text{ in } 34 = 4 \text{ mal R.2} \checkmark$$

$$8 \text{ in } 43 = 5 \text{ mal R.3} \checkmark$$

$$8 \text{ in } 26 = 3 \text{ mal R.2} \checkmark$$

$$8 \text{ in } 62 = 7 \text{ mal R.6} \checkmark$$

$$8 \text{ in } 45 = 5 \text{ mal R.5} \checkmark$$

$$8 \text{ in } 54 = 6 \text{ mal R.6} \checkmark$$

$$8 \text{ in } 17 = 2 \text{ mal R.1} \checkmark$$

$$8 \text{ in } 71 = 8 \text{ mal R.7} \checkmark$$

$$8 \text{ in } 23 = 2 \text{ mal R.7} \checkmark$$

$$8 \text{ in } 32 = 4 \text{ mal} \checkmark$$

$$9 \text{ in } 57 = 5 \text{ mal R.7} \checkmark$$

$$9 \text{ in } 43 = 4 \text{ mal R.7} \checkmark$$

$$9 \text{ in } 26 = 2 \text{ mal R.8} \checkmark$$

$$9 \text{ in } 62 = 6 \text{ mal R.8} \checkmark$$

$$9 \text{ in } 45 = 5 \text{ mal} \checkmark$$

$$9 \text{ in } 54 = 6 \text{ mal} \checkmark$$

$$9 \text{ in } 17 = 1 \text{ mal R.8} \checkmark$$

$$9 \text{ in } 71 = 7 \text{ mal R.8} \checkmark$$

$$9 \text{ in } 23 = 2 \text{ mal R.5} \checkmark$$

$$9 \text{ in } 32 = 3 \text{ mal R.5} \checkmark$$

Fehler: 0

6

$$5 \text{ in } 17 =$$

$$5 \text{ in } 17 = 3 \text{ mal R.2} \quad 82-$$

$$5 \text{ in } 36 = 7 \text{ mal R.1} \quad 82 - 42 = 40$$

$$5 \text{ in } 24 = 4 \text{ mal R.4} \quad 43 - 42 = 1$$

$$5 \text{ in } 11 = 2 \text{ mal R.1} \quad 74 - 42 = 32$$

$$5 \text{ in } 42 = 8 \text{ mal R.2} \quad 91 - 42 = 49$$

$$5 \text{ in } 54 = 10 \text{ mal R.4} \quad 55 - 42 = 13$$

$$5 \text{ in } 39 = 7 \text{ mal R.4} \quad 86 - 42 = 44$$

$$5 \text{ in } 27 = 5 \text{ mal R.2} \quad 94 - 42 = 52$$

$$5 \text{ in } 45 = 9 \text{ mal} \quad 62 - 42 = 20$$

$$5 \text{ in } 57 = 11 \text{ mal R.2} \quad 73 - 42 = 31$$

$$7 \text{ in } 19 = 2 \text{ mal R.5}$$

$$7 \text{ in } 48 = 6 \text{ mal R.6}$$

$$7 \text{ in } 35 = 5 \text{ mal R.0}$$

$$7 \text{ in } 13 = 1 \text{ mal R.6}$$

$$7 \text{ in } 16 = 2 \text{ mal R.2}$$

$$7 \text{ in } 64 = 9 \text{ mal R.1}$$

$$7 \text{ in } 50 = 7 \text{ mal R.1}$$

$$7 \text{ in } 72 = 10 \text{ mal R.2}$$

$$7 \text{ in } 20 = 2 \text{ mal R.6}$$

$$7 \text{ in } 65 = 9 \text{ mal R.2}$$

Fehler:

$$55 \text{ Pf} + 15 \text{ Pf}$$

$$55 \text{ Pf} + 15 \text{ Pf} = 70 \text{ Pf} \checkmark$$

$$48 \text{ Pf} + 22 \text{ Pf} = 70 \text{ Pf} \checkmark$$

$$69 \text{ Pf} + 21 \text{ Pf} = 90 \text{ Pf} \checkmark$$

$$39 \text{ Pf} + 11 \text{ Pf} = 50 \text{ Pf} \checkmark$$

$$47 \text{ Pf} + 33 \text{ Pf} = 80 \text{ Pf} \checkmark$$

$$57 \text{ Pf} + 23 \text{ Pf} = 80 \text{ Pf} \checkmark$$

$$62 \text{ cm} + 20 \text{ cm} = 82 \text{ cm} \checkmark$$

$$59 \text{ cm} + 23 \text{ cm} = 82 \text{ cm} \checkmark$$

$$54 \text{ cm} + 20 \text{ cm} = 74 \text{ cm} \checkmark$$

$$55 \text{ cm} + 19 \text{ cm} = 74 \text{ cm} \checkmark$$

$$75 \text{ cm} + 20 \text{ cm} = 95 \text{ cm} \checkmark$$

$$76 \text{ cm} + 19 \text{ cm} = 95 \text{ cm} \checkmark$$

Fehler: 0

Tischplatte

Tischplatte: 1,20 m

Tischplatte: 1,20 m

Tischhöhe: 0,76 m $4 \cdot 1 \text{ m} = 4 \text{ m}$

Stuhlhöhe: 0,86 m $7 \cdot 1 \text{ m} = 7 \text{ m}$

Stuhlbreite: 0,42 m $10 \cdot 1 \text{ m} = 10 \text{ m}$

Mäppchenlänge: 0,19 m $3 \cdot 1 \text{ m} = 3 \text{ m}$

Mäppchenbreite: 0,08 m $8 \cdot 1 \text{ m} = 8 \text{ m}$

Buchlänge: 0,23 m $1 \cdot 1 \text{ m} = 1 \text{ m}$

Buchzeichen: 0,15 m $9 \cdot 1 \text{ m} = 9 \text{ m}$

Kühlschrank-
höhe: 0,86 m $5 \cdot 1 \text{ m} = 5 \text{ m}$

Bankbreite: 1,04 m $2 \cdot 1 \text{ m} = 2 \text{ m}$

Bankhöhe: 0,81 m $6 \cdot 1 \text{ m} = 6 \text{ m}$

$1 \cdot 1 = 1$ $6 \cdot 1 = 6$ $1 \text{ in } 9 = 9 \text{ mal}$

$2 \cdot 1 = 2$ $7 \cdot 1 = 7$ $1 \text{ in } 2 = 2 \text{ mal}$

$3 \cdot 1 = 3$ $8 \cdot 1 = 8$ $1 \text{ in } 7 = 7 \text{ mal}$

$4 \cdot 1 = 4$ $9 \cdot 1 = 9$ $1 \text{ in } 1 = 1 \text{ mal}$

$5 \cdot 1 = 5$ $10 \cdot 1 = 10$ $1 \text{ in } 6 = 6 \text{ mal}$

Fehler:

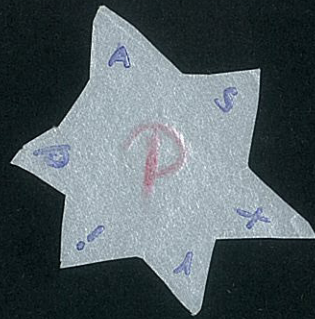
4. Rechnen 2 Klasse

Astrid Pflüger

80 g/qm HOLZFREI

Brunnen  Heft

Nr. 10



$$1 \text{ m in } 5 \text{ m} = 5 \text{ mal} \quad 1 \cdot 5 = 5$$

$$1 \text{ m in } 3 \text{ m} = 3 \text{ mal} \quad 3 \cdot 1 = 3$$

$$1 \text{ m in } 8 \text{ m} = 8 \text{ mal} \quad 1 \cdot 7 = 7$$

$$1 \text{ m in } 10 \text{ m} = 10 \text{ mal} \quad 7 \cdot 1 = 7$$

$$1 \text{ m in } 4 \text{ m} = 4 \text{ mal} \quad 1 \cdot 4 = 4$$

$$1 \text{ m in } 9 \text{ m} = 9 \text{ mal} \quad 4 \cdot 1 = 4$$

$$1 \text{ in } 9 = 9 \text{ mal} \quad 1 \cdot 6 = 6$$

$$1 \text{ in } 2 = 2 \text{ mal} \quad 6 \cdot 1 = 6$$

$$1 \text{ in } 7 = 7 \text{ mal} \quad 1 \cdot 9 = 9$$

$$1 \text{ in } 1 = 1 \text{ mal} \quad 9 \cdot 1 = 9$$

$$1 \text{ in } 6 = 6 \text{ mal} \quad 1 \cdot 2 = 2$$

$$2 \cdot 1 = 2$$

$$1 \cdot 5 = 5$$

$$5 \cdot 1 = 5$$

$$1 \cdot 8 = 8$$

$$8 \cdot 1 = 8$$

$$1 \cdot 10 = 10$$

$$10 \cdot 1 = 10$$

$8.) 5 \cdot 9 = 45$

$7 \cdot 8 = 56$

$8 \cdot 7 = 56$

$10 \cdot 7 = 70$

$0 \cdot 9 = 0$

$9 \cdot 9 = 81$

$6 \cdot 8 = 48$

$9.) 9 \cdot 5 = 45$

$2 \cdot 7 = 14$

$7 \cdot 4 = 28$

$4 \cdot 9 = 36$

$9 \cdot 3 = 27$

$6 \cdot 7 = 42$

$7 \cdot 6 = 42$

$10.) 6 \cdot 6 = 36$

$9 \cdot 0 = 0$

$10 \cdot 9 = 90$

$5 \cdot 8 = 40$

$7 \cdot 1 = 7$

$7 \cdot 7 = 49$

$3 \cdot 9 = 27$

$1 \cdot 7 = 7$

$2 \cdot 7 = 14$

$3 \cdot 7 = 21$

$4 \cdot 7 = 28$

$5 \cdot 7 = 35$

$6 \cdot 7 = 42$

$7 \cdot 7 = 49$

$8 \cdot 7 = 56$

$9 \cdot 7 = 63$

$10 \cdot 7 = 70$

$11.) 8 \cdot 6 + 42 = 90 \checkmark$

$7 \cdot 5 + 35 = 70 \checkmark$

$3 \cdot 8 + 26 = 50 \checkmark$

$0 \cdot 4 + 30 = 30 \checkmark$

$10 \cdot 7 + 30 = 100 \checkmark$

$9 \cdot 8 + 8 = 80 \checkmark$

$4 \cdot 7 + 12 = 40 \checkmark$

$13.) 24 = 4 \cdot 6 \checkmark$

$64 = 8 \cdot 8 \checkmark$

$35 = 7 \cdot 5 \checkmark$

$21 = 3 \cdot 7 \checkmark$

$28 = 7 \cdot 4 \checkmark$

$36 = 6 \cdot 6 \checkmark$

$12.) 16 = 4 + 4 + 4 + 4 = 4 \cdot 4$

$18 = 3 + 3 + 3 + 3 + 3 = 6 \cdot 3$

Fehler: 0

$14.) 80 = 8 \cdot 10 \checkmark$

$15.) 56 = 7 \cdot 8 \checkmark$

$63 = 7 \cdot 9 \checkmark$

$56 = 8 \cdot 7 \checkmark$

$25 = 5 \cdot 5 \checkmark$

$16 = 2 \cdot 8 \checkmark$

$49 = 7 \cdot 7 \checkmark$

$16 = 8 \cdot 2 \checkmark$

$18 = 3 \cdot 6 \checkmark$

$72 = 8 \cdot 9 \checkmark$

$32 = 8 \cdot 4 \checkmark$

$72 = 9 \cdot 8 \checkmark$

$$\begin{array}{l}
 16) \quad 14 = 2 \cdot 7 \checkmark \quad 1 \cdot 8 = 8 \\
 \quad \quad 15 = 3 \cdot 5 \checkmark \quad 2 \cdot 8 = 16 \\
 \quad \quad 16 = 4 \cdot 4 \checkmark \quad 3 \cdot 8 = 24 \\
 \quad \quad 20 = 5 \cdot 4 \checkmark \quad 4 \cdot 8 = 32 \\
 \quad \quad 21 = 7 \cdot 3 \checkmark \quad 5 \cdot 8 = 40 \\
 \quad \quad 24 = 3 \cdot 8 \checkmark \quad 6 \cdot 8 = 48 \\
 \quad \quad \quad \quad \quad \quad 7 \cdot 8 = 56 \\
 16) \quad 10 \cdot 8 = 80 \quad \quad 8 \cdot 8 = 64 \\
 \quad \quad 9 \cdot 8 = 72 \quad \quad 9 \cdot 8 = 72 \\
 \quad \quad 8 \cdot 8 = 64 \quad \quad 10 \cdot 8 = 80 \\
 \quad \quad 7 \cdot 8 = 56 \\
 \quad \quad 6 \cdot 8 = 48 \\
 \quad \quad 5 \cdot 8 = 40 \\
 \quad \quad 4 \cdot 8 = 32 \\
 \quad \quad 3 \cdot 8 = 24 \\
 \quad \quad 2 \cdot 8 = 16 \\
 \quad \quad 1 \cdot 8 = 8
 \end{array}$$

Was der Mensch doppelt hat und doppelt braucht

1) Wir haben 2 Arme, 2 Beine, 2 Augen, 2 Hände, 2 Füße
2 Backen, 2 Schultern und 2 Ohren.

2) Wir brauchen 2 Strümpfe, 2 Schuhe, 2 Handschuhe.

3) Eine Familie hat 4 Kinder. 4 Paar Strümpfe gibt es
zu waschen und zu stopfen. 8 einzelne Strümpfe
sind es.

9) Paare Schuhe

$$3 \quad 6 \checkmark$$

$$9 \quad 18 \checkmark$$

$$5 \quad 10 \checkmark$$

$$7 \quad 14 \checkmark$$

$$4 \quad 8 \checkmark$$

$$8 \quad 16 \checkmark$$

$$6 \quad 12 \checkmark$$

11 a.)

$$25 \text{ DM} + 25 \text{ DM} = 50 \text{ DM}$$

$$10 \text{ DM} + 10 \text{ DM} = 20 \text{ DM}$$

$$41 \text{ DM} + 41 \text{ DM} = 82 \text{ DM}$$

$$35 \text{ DM} + 35 \text{ DM} = 70 \text{ DM}$$

$$28 \text{ DM} + 28 \text{ DM} = 56 \text{ DM}$$

$$15 \text{ DM} + 15 \text{ DM} = 30 \text{ DM}$$

$$9 \text{ DM} + 9 \text{ DM} = 18 \text{ DM}$$

10) $7 \text{ Pf} + 7 \text{ Pf} = 14 \text{ Pf} \checkmark$

$$19 \text{ Pf} + 19 \text{ Pf} = 38 \text{ Pf} \checkmark$$

$$40 \text{ Pf} + 40 \text{ Pf} = 80 \text{ Pf} \checkmark$$

$$24 \text{ Pf} + 24 \text{ Pf} = 48 \text{ Pf} \checkmark$$

$$32 \text{ Pf} + 32 \text{ Pf} = 64 \text{ Pf} \checkmark$$

$$16 \text{ Pf} + 16 \text{ Pf} = 32 \text{ Pf} \checkmark$$

$$42 \text{ Pf} + 42 \text{ Pf} = 84 \text{ Pf} \checkmark$$

$$27 \text{ Pf} + 27 \text{ Pf} = 54 \text{ Pf} \checkmark$$

Fehler: 0

11 b.)

$$33 \text{ cm} + 33 \text{ cm} = 66 \text{ cm}$$

$$50 \text{ cm} + 50 \text{ cm} = 100 \text{ cm}$$

$$11 \text{ cm} + 11 \text{ cm} = 22 \text{ cm}$$

$$48 \text{ cm} + 48 \text{ cm} = 96 \text{ cm}$$

$$17 \text{ cm} + 17 \text{ cm} = 34 \text{ cm}$$

$$21 \text{ cm} + 21 \text{ cm} = 42 \text{ cm}$$

$$25 \text{ cm} + 25 \text{ cm} = 50 \text{ cm}$$

18.1.1963

11c)

$$14\text{l} + 14\text{l} = 28\text{l}$$

$$41\text{l} + 41\text{l} = 82\text{l}$$

$$35\text{l} + 35\text{l} = 70\text{l}$$

$$27\text{l} + 27\text{l} = 54\text{l}$$

$$18\text{l} + 18\text{l} = 36\text{l}$$

$$33\text{l} + 33\text{l} = 66\text{l}$$

$$46\text{l} + 46\text{l} = 92\text{l}$$

11b)

$$33\text{cm} + 33\text{cm} = 66\text{cm}$$

$$50\text{cm} + 50\text{cm} = 100\text{cm}$$

$$11\text{cm} + 11\text{cm} = 22\text{cm}$$

$$48\text{cm} + 48\text{cm} = 96\text{cm}$$

$$17\text{cm} + 17\text{cm} = 34\text{cm}$$

$$21\text{cm} + 21\text{cm} = 42\text{cm}$$

$$25\text{cm} + 25\text{cm} = 50\text{cm}$$

Fehler:

13a)

$$1 + 1 = 2$$

$$2 + 2 = 4$$

$$3 + 3 = 6$$

$$4 + 4 = 8$$

$$5 + 5 = 10$$

$$6 + 6 = 12$$

$$7 + 7 = 14$$

$$8 + 8 = 16$$

$$9 + 9 = 18$$

$$10 + 10 = 20$$

13c)

$$21 + 21 = 42$$

$$22 + 22 = 44$$

$$23 + 23 = 46$$

$$24 + 24 = 48$$

$$25 + 25 = 50$$

13b)

$$41 + 41 = 82$$

$$42 + 42 = 84$$

$$43 + 43 = 86$$

$$44 + 44 = 88$$

$$45 + 45 = 90$$

$$46 + 46 = 92$$

$$47 + 47 = 94$$

$$48 + 48 = 96$$

$$49 + 49 = 98$$

$$50 + 50 = 100$$

$$26 + 26 = 52$$

$$27 + 27 = 54$$

$$28 + 28 = 56$$

$$29 + 29 = 58$$

$$30 + 30 = 60$$

13d.)

$$31 + 31 = 62$$

$$32 + 32 = 64$$

$$33 + 33 = 66$$

$$34 + 34 = 68$$

$$35 + 35 = 70$$

$$36 + 36 = 72$$

$$38 + 38 = 74$$

$$39 + 39 =$$

13d.)

$$31 + 31 = 62$$

$$32 + 32 = 64$$

$$33 + 33 = 66$$

$$34 + 34 = 68$$

$$35 + 35 = 70$$

$$36 + 36 = 72$$

$$37 + 37 = 74$$

$$38 + 38 = 76$$

$$39 + 39 = 78$$

$$40 + 40 = 80$$

$$11 + 11 = 22$$

$$12 + 12 = 24$$

$$13 + 13 = 26$$

$$11 + 11 = 22 \quad 1 \cdot 8 = 8$$

$$12 + 12 = 24 \quad 2 \cdot 8 = 16$$

$$13 + 13 = 26 \quad 3 \cdot 8 = 24$$

$$14 + 14 = 28 \quad 4 \cdot 8 = 32$$

$$15 + 15 = 30 \quad 5 \cdot 8 = 40$$

$$16 + 16 = 32 \quad 6 \cdot 8 = 48$$

$$17 + 17 = 34 \quad 7 \cdot 8 = 56$$

$$18 + 18 = 36 \quad 8 \cdot 8 = 64$$

$$19 + 19 = 38 \quad 9 \cdot 8 = 72$$

$$20 + 20 = 40 \quad 10 \cdot 8 = 80$$

$$10 \cdot 8 = 80 \quad 5 \cdot 8 = 40$$

$$9 \cdot 8 = 72 \quad 4 \cdot 8 = 32$$

$$8 \cdot 8 = 64 \quad 3 \cdot 8 = 24$$

$$7 \cdot 8 = 56 \quad 2 \cdot 8 = 16$$

$$6 \cdot 8 = 48 \quad 1 \cdot 8 = 8$$

21.1.1963

32.)

$6 \cdot 6 + 5 = 41$

$3 \cdot 6 + 4 = 22$

$8 \cdot 6 + 3 = 51$

$4 \cdot 6 + 2 = 26$

$1 \cdot 6 + 5 = 11$

$7 \cdot 6 + 4 = 46$

34.)

$9 \cdot 6 - 5 = 49$

$7 \cdot 6 - 3 = 39$

$10 \cdot 6 - 2 = 58$

$2 \cdot 6 - 4 = 8$

$5 \cdot 6 - 5 = 25$

$8 \cdot 6 - 3 = 45$

35.)

$4 \cdot 6 + 5 = 29$

$8 \cdot 4 - 3 = 29$

$9 \cdot 3 + 2 = 29$

$6 \cdot 6 - 4 = 32$

$7 \cdot 4 + 3 = 31$

$7 \cdot 3 - 2 = 19$

$6 \cdot 5 + = 40$

$8 \cdot 6 + = 50$

$9 \cdot 4 + = 40$

$6 \cdot 3 + = 20$

$2 \cdot 4 + = 10$

$6 \cdot 6 + = 40$

36.)

$6 \cdot 5 + 10 = 40$

$8 \cdot 6 + 2 = 50$

$7 \cdot 4 + 12 = 40$

$6 \cdot 3 + 2 = 20$

$2 \cdot 4 + 2 = 10$

$6 \cdot 6 + 4 = 40$

2.)

$46 + 10 + 8 = 64$

$46 + 18 = 64$

$75 + 10 + 6 = 91$

$75 + 16 = 91$

$33 + 10 + 9 = 52$

$33 + 19 = 52$

$17 + 10 + 7 = 34$

$17 + 17 = 34$

15.)

$37 DM + 14 DM = 51 DM$

$29 DM + 17 DM = 46 DM$

$46 DM + 18 DM = 64 DM$

$18 DM + 18 DM = 36 DM$

15.)

$37 DM + 14 DM = 51 DM$

$29 DM + 17 DM = 46 DM$

$46 DM + 18 DM = 64 DM$

$18 DM + 18 DM = 36 DM$

8.)

$76 - 10 - 8 = 58$

$76 - 18 = 58$

$52 - 10 - 4 = 38$

$52 - 14 = 38$

$93 - 10 - 7 = 76$

$93 - 17 = 76$

$84 - 10 - 9 = 65$

$84 - 19 = 65$

$$3.) 35 + 20 + 7 = 62$$

$$35 + 27 = 62$$

$$24 + 40 + 8 = 72$$

$$24 + 48 = 72$$

$$19 + 50 + 3 = 72$$

$$19 + 53 = 72$$

$$46 + 30 + 6 = 82$$

$$46 + 36 = 82$$

$$8.) 35 + 20 + 7 = 62$$

$$35 + 27 = 62$$

$$24 + 48 = 72$$

$$24 + 40 + 8 = 72$$

$$19 + 50 + 3 = 72$$

$$19 + 53 = 72$$

$$46 + 30 + 6 = 82$$

$$46 + 36 = 82$$

$$4.) 27 \text{ DM} + 16 \text{ DM} = 43 \text{ DM}$$

$$26 \text{ DM} + 16 \text{ DM} = 42 \text{ DM}$$

$$74 \text{ DM} + 18 \text{ DM} = 92 \text{ DM}$$

$$36 \text{ DM} + 15 \text{ DM} = 51 \text{ DM}$$

$$18 \text{ DM} + 19 \text{ DM} = 37 \text{ DM}$$

$$17 \text{ DM} + 19 \text{ DM} = 36 \text{ DM}$$

$$75 \text{ DM} + 17 \text{ DM} = 92 \text{ DM}$$

$$76 \text{ DM} + 17 \text{ DM} = 93 \text{ DM}$$

$$9.) 57 - 20 - 8 = 29$$

$$57 - 28 = 29$$

$$41 - 20 - 6 = 15$$

$$41 - 26 = 15$$

$$78 - 20 - 9 = 49$$

$$78 - 29 = 49$$

$$61 - 20 - 4 = 37$$

$$61 - 24 = 37$$

$$15) 37DM + DM = 51$$

$$15) 37DM + DM = 51$$

$$9) 35 + 20 + 7 = 62 \quad 9) 57 - 20$$

$$35 + 27 = 62$$

$$24 + 40 + 8 = 72$$

$$24 + 48 = 72$$

$$19 + 50 + 3 = 72$$

$$19 + 53 = 72$$

$$46 + 30 + 6 = 82$$

$$46 + 36 = 82$$

$$4) 27DM + 16DM = 43DM$$

$$26DM + 16DM = 42DM$$

$$74DM + 18DM = 92DM$$

$$36DM + 15DM = 51DM$$

$$18DM + 19DM = 37DM$$

$$17DM + 19DM = 36DM$$

$$75DM + 17DM = 92DM$$

$$76DM + 17DM = 93DM$$

$$3) \quad 35 + 20 + 7 = 62 \quad 9) \quad 57 - 20 - 8 = 29$$

$$35 + 27 = 62 \quad 57 - 28 = 29$$

$$24 + 40 + 8 = 72 \quad 41 - 20 - 6 = 15$$

$$24 + 48 = 72 \quad 41 - 26 = 15$$

$$19 + 50 + 3 = 72 \quad 78 - 20 + 9 = 49$$

$$19 + 53 = 72 \quad 78 - 29 = 49$$

$$46 + 30 + 6 = 82 \quad 61 - 20 - 4 = 37$$

$$46 + 36 = 82 \quad 61 - 24 = 37$$

$$4) \quad 27 \text{ DM} + 16 \text{ DM} = 43 \text{ DM}$$

$$26 \text{ DM} + 16 \text{ DM} = 42 \text{ DM}$$

$$74 \text{ DM} + 18 \text{ DM} = 92 \text{ DM}$$

$$36 \text{ DM} + 15 \text{ DM} = 51 \text{ DM}$$

$$18 \text{ DM} + 19 \text{ DM} = 37 \text{ DM}$$

$$17 \text{ DM} + 19 \text{ DM} = 36 \text{ DM}$$

$$75 \text{ DM} + 17 \text{ DM} = 92 \text{ DM}$$

$$76 \text{ DM} + 17 \text{ DM} = 93 \text{ DM}$$

$$15) \quad 37 \text{ DM} + 14 \text{ DM} = 51 \text{ DM}$$

$$29 \text{ DM} + 17 \text{ DM} = 46 \text{ DM}$$

$$46 \text{ DM} + 18 \text{ DM} = 64 \text{ DM}$$

$$18 \text{ DM} + 18 \text{ DM} = 36 \text{ DM}$$

$$21) \quad 1 \text{ Tg.} + 8 \text{ St d.} = 32 \text{ St d.}$$

$$1 \text{ Tg.} + 13 \text{ St d.} = 25 \text{ St d.}$$

$$1 \text{ Tg.} + 9 \text{ St d.} = 33 \text{ St d.}$$

$$1 \text{ Tg.} + 17 \text{ St d.} = 41 \text{ St d.}$$

$$1 \text{ Tg.} + 20 \text{ St d.} = 44 \text{ St d.}$$

$$1 \text{ Tg.} + 13 \text{ St d.} = 37 \text{ St d.}$$

$$1 \text{ Tg.} + 6 \text{ St d.} = 30 \text{ St d.}$$

$$1 \text{ Tg.} - 6 \text{ St d.} = 18 \text{ St d.}$$

$$1 \text{ Tg.} - 9 \text{ St d.} = 15 \text{ St d.}$$

$$1 \text{ Tg.} - 5 \text{ St d.} = 19 \text{ St d.}$$

$$1 \text{ Tg.} - 16 \text{ St d.} = 8 \text{ St d.}$$

$$1 \text{ Tg.} - 11 \text{ St d.} = 13 \text{ St d.}$$

$$1 \text{ Tg.} - 19 \text{ St d.} = 5 \text{ St d.}$$

21.)

$$42DM + 8DM = 50DM$$

$$28DM + 22DM = 50DM$$

$$36DM + 14DM = 50DM$$

$$17DM + 33DM = 50DM$$

$$23DM + 27DM = 50DM$$

$$38DM + 12DM = 50DM$$

$$14DM + 36DM = 50DM$$

22.)

$$19 + 5 = 24$$

$$46 + 6 = 52$$

$$33 + 17 = 50$$

$$20 + 16 = 36$$

$$68 + 12 = 80$$

$$75 + 9 = 84$$

$$16 + 12 = 28$$

$$49 + 11 = 60$$

$$24 + 15 = 39$$

$$82 + 18 = 100$$

$$37 + 33 = 70$$

$$41 + 49 = 90$$

25.)

$$(55Pf + \quad = 70Pf)$$

25.)

$$55Pf + 15Pf = 70Pf$$

$$48Pf + 22Pf = 70Pf$$

$$69Pf + 21Pf = 90Pf$$

$$39Pf + 11Pf = 50Pf$$

$$47Pf + 33Pf = 80Pf$$

$$57Pf + 23Pf = 80Pf$$

26.)

$$62 + 20 = 82$$

$$59 + 23 = 82$$

$$27.) 83 + 16 = 99$$

$$85 + 7 = 92$$

$$56 + 27 = 83$$

$$49 + 26 = 75$$

$$78 + 13 = 91$$

$$79 + 12 = 91$$

$$28.) 83, 67 + 45 = 82$$

$$48 + 28 = 76$$

$$39 + 39 = 78$$

$$38 + 43 = 81$$

$$26 + 15 = 41$$

$$73 + 22 = 95$$

$$27.) 83 + 16 = 99$$

$$85 + 7 = 92$$

$$56 + 27 = 83$$

$$49 + 26 = 75$$

$$78 + 13 = 91$$

$$79 + 12 = 91$$

$$28.) 67 + 15 = 82$$

$$48 + 28 = 76$$

$$39 + 39 = 78$$

$$38 + 43 = 81$$

$$26 + 15 = 41$$

$$73 + 22 = 95$$

$$30.) 80 \text{ DM} - 70 \text{ DM} = 10 \text{ DM}$$

$$90 \text{ DM} - 60 \text{ DM} = 30 \text{ DM}$$

$$70 \text{ DM} - 50 \text{ DM} = 20 \text{ DM}$$

$$60 \text{ DM} - 40 \text{ DM} = 20 \text{ DM}$$

$$100 \text{ DM} - 70 \text{ DM} = 30 \text{ DM}$$

$$80 \text{ DM} - 50 \text{ DM} = 30 \text{ DM}$$

$$30.) 80 \text{ DM} - 70 \text{ DM} = 10 \text{ DM}$$

$$90 \text{ DM} - 60 \text{ DM} = 30 \text{ DM}$$

$$70 \text{ DM} - 50 \text{ DM} = 20 \text{ DM}$$

$$60 \text{ DM} - 40 \text{ DM} = 20 \text{ DM}$$

$$100 \text{ DM} - 70 \text{ DM} = 30 \text{ DM}$$

$$80 \text{ DM} - 50 \text{ DM} = 30 \text{ DM}$$

271)

$2 \cdot 16 = 32$

$2 \cdot 25 = 50$

$2 \cdot 32 = 64$

$2 \cdot 14 = 28$

$2 \cdot 44 = 88$

$2 \cdot 35 = 70$

$2 \cdot 18 = 36$

$2 \cdot 42 = 84$

$2 \cdot 24 = 48$

$2 \cdot 50 = 100$

272)

$50 : 2 = 25$

$14 : 2 = 7$

$60 : 2 = 30$

$28 : 2 = 14$

$42 : 2 = 21$

$84 : 2 = 42$

$16 : 2 = 8$

$100 : 2 = 50$

$26 : 2 = 13$

$66 : 2 = 33$

8a)

$4 \text{ l in } 20 \text{ l} = 5 \text{ mal}$

$5 \text{ l in } 15 \text{ l} = 3 \text{ mal}$

$2 \text{ l in } 12 \text{ l} = 6 \text{ mal}$

$4 \text{ l in } 12 \text{ l} = 3 \text{ mal}$

$3 \text{ l in } 9 \text{ l} = 3 \text{ mal}$

8b)

$8 \text{ cm in } 32 \text{ cm} = 4 \text{ mal}$

$4 \text{ cm in } 16 \text{ cm} = 4 \text{ mal}$

$7 \text{ cm in } 35 \text{ cm} = 5 \text{ mal}$

$5 \text{ cm in } 20 \text{ cm} = 4 \text{ mal}$

$3 \text{ cm in } 15 \text{ cm} = 5 \text{ mal}$

8c)

$9 \text{ in } 27 = 3 \text{ mal}$

$6 \text{ in } 36 = 6 \text{ mal}$

$3 \text{ in } 18 = 6 \text{ mal}$

$2 \text{ in } 10 = 5 \text{ mal}$

$4 \text{ in } 24 = 6 \text{ mal}$

8d)

$4 \text{ in } 20 = 5 \text{ mal}$

$7 \text{ in } 21 = 3 \text{ mal}$

$9 \text{ in } 54 = 6 \text{ mal}$

$8 \text{ in } 24 = 3 \text{ mal}$

$10 \text{ in } 30 = 3 \text{ mal}$

273)

$4 \cdot 11 = 44$

$4 \cdot 22 = 88$

$4 \cdot 20 = 80$

$4 \cdot 18 = 72$

$4 \cdot 15 = 60$

$4 \cdot 14 = 56$

$4 \cdot 12 = 48$

$4 \cdot 10 = 40$

$4 \cdot 21 = 84$

$4 \cdot 16 = 64$